

Anti-Cleaved-COL1A2 (G1102) Antibody

Catalog Number: A00624

About COL1A2

Binds and is activated by neuregulins and NTAK.

Overview

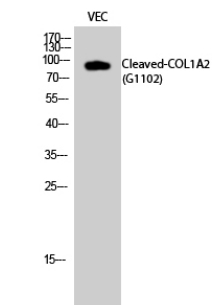
Product Name	Anti-Cleaved-COL1A2 (G1102) Antibody
Reactive Species	Human
Description	Boster Bio Anti-Cleaved-COL1A2 (G1102) Antibody catalog # A00624. Tested in WB applications. This antibody reacts with Human.
Application	WB
Clonality	Polyclonal 8H7
Formulation	Liquid in PBS containing 50% glycerol, 0.5% BSA and 0.02% sodium azide.
Storage Instructions	Store at -20°C for one year. For short term storage and frequent use, store at 4°C for up to one month. Avoid repeated freeze-thaw cycles.
Host	Rabbit
Uniprot ID	P08123

Technical Details

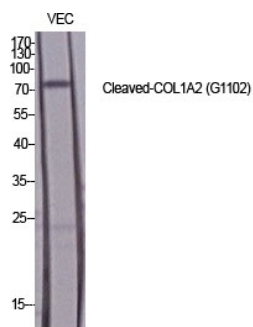
Immunogen	Synthesized peptide derived from the N-terminal region of human COL1A2. at AA range: 1020-1100
Predicted Reactive Species	Canine
Cross Reactivity	No cross reactivity with other proteins.
Isotype	IgG
Form	Liquid
Concentration	1 mg/mL.
Purification	Immunogen affinity purified
Suggested Dilutions	Dilute the sample so that the expected range of concentrations fall within the detection range of this kit. If the expected range of concentration is unknown, a pilot test should be conducted to decide the optimal dilution ratio for your samples. Some PubMed article(s) citing the expression level of this target are as follows:

Boster Bio's internal QC testing used:
WB, 1:500-1:2000

Anti-Cleaved-COL1A2 (G1102) Antibody (A00624) Images



Western Blot (WB) analysis of VEC cells using Cleaved-COL1A2 (G1102) Polyclonal antibody.



Western Blot (WB) analysis of specific cells using Cleaved-COL1A2 (G1102) Polyclonal antibody.

Submit a product review to Biocompare.com

Submit a review of this product to Biocompare.com to receive a \$20 Amazon.com giftcard! Your reviews help your fellow scientists make the right decisions. Thank you for your contribution.



Anti-Cleaved-COL1A2 (G1102) Antibody