

Anti-COL1A2 (S3) Antibody

Catalog Number: A00624S3

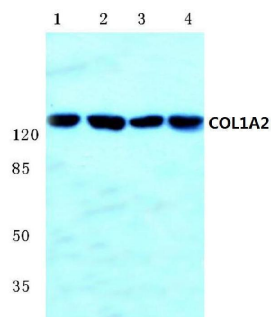
Overview

Product Name	Anti-COL1A2 (S3) Antibody
Reactive Species	Human, Mouse, Rat
Description	Boster Bio Anti-COL1A2 (S3) Antibody catalog # A00624S3. Tested in WB,IHC,IF applications. This antibody reacts with Human,Mouse,Rat.
Application	IF, IHC, WB
Clonality	Polyclonal
Formulation	Rabbit IgG, 1mg/ml in PBS with 0.02% sodium azide, 50% glycerol, pH7.2
Storage Instructions	Store at -20°C for one year. For short term storage and frequent use, store at 4°C for up to one month. Avoid repeated freeze-thaw cycles.
Host	Rabbit
Uniprot ID	P08123

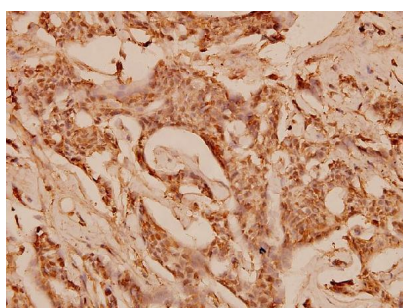
Technical Details

Immunogen	Synthetic peptide, corresponding to the N-terminus of Human COL1A2.
Cross Reactivity	No cross reactivity with other proteins.
Isotype	IgG
Form	Liquid
Concentration	1 mg/ml
Purification	The antibody was affinity-purified from rabbit antiserum by affinity-chromatography using epitope-specific immunogen and the purity is > 95% (by SDS-PAGE).
Suggested Dilutions	WB: 1:500-1:1000 IHC: 1:50-1:200 IF: 1:50-1:200

Anti-COL1A2 (S3) Antibody (A00624S3) Images



Western blot (WB) analysis of COL1A2 (S3) polyclonal antibody at 1:500 dilution Lane1:Hela cell lysate Lane2:Mouse liver tissue lysate Lane3:Mouse lung tissue lysate Lane4:Rat liver tissue lysate



Immunohistochemistry (IHC) analyzes of COL1A2 (S3) pAb in paraffin-embedded human breast carcinoma tissue at 1:100.

Submit a product review to Biocompare.com

Submit a review of this product to Biocompare.com to receive a \$20 Amazon.com giftcard! Your reviews help your fellow scientists make the right decisions. Thank you for your contribution.



Anti-COL1A2 (S3) Antibody

For Research Use Only. Not for use in diagnostic procedures.