

Anti-Corticoliberin CRH Antibody

Catalog Number: A00629-2

About CRH

Corticotropin-releasing hormone (CRH) is secreted by the paraventricular nucleus (PVN) of the hypothalamus in response to stress (1). In addition to production in the hypothalamus, this protein is also synthesized in peripheral tissues, such as T lymphocytes and is highly expressed in the placenta where it is a marker that determines the length of gestation and the timing of parturition and delivery. A rapid increase in circulating levels of the hormone occurs at the onset of parturition, suggesting that, in addition to its metabolic functions, this protein may act as a trigger for parturition (2). Marked reduction in this protein has been observed in association with Alzheimer disease (3).

Overview

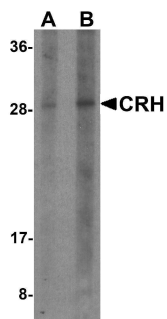
Product Name	Anti-Corticoliberin CRH Antibody
Reactive Species	Human
Description	Boster Bio Anti-Corticoliberin CRH Antibody (Catalog # A00629-2). Tested in ELISA, WB, IHC-P, IF applications. This antibody reacts with Human.
Application	ELISA, IF, IHC-P, WB
Clonality	Polyclonal
Formulation	CRH antibody is supplied in PBS containing 0.02% sodium azide.
Storage Instructions	CRH antibody can be stored at 4°C for three months and -20°C, stable for up to one year.
Host	Rabbit
Uniprot ID	P06850

Technical Details

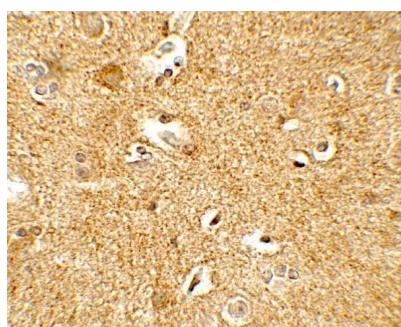
Immunogen	CRH antibody was raised against a 16 amino acid peptide near the amino terminus of human CRH. The immunogen is located within amino acids 30 - 80 of CRH.
Predicted Reactive Species	Pig
Cross Reactivity	CRH antibody is human specific.
Isotype	IgG
Form	Liquid
Concentration	1 mg/mL
Purification	CRH antibody is affinity chromatography purified via peptide column.
Suggested Dilutions	CRH antibody can be used for detection of CRH by Western blot at 1 - 2 ug/ml. Antibody can also be

used for Immunohistochemistry at 5 ug/mL. For Immunoflorescence start at 20 ug/mL.
Antibody validated: Western Blot in human samples; Immunohistochemistry in human samples and Immunofluorescence in human samples. All other applications and species not yet tested. Optimal dilutions for each application should be determined by the researcher.

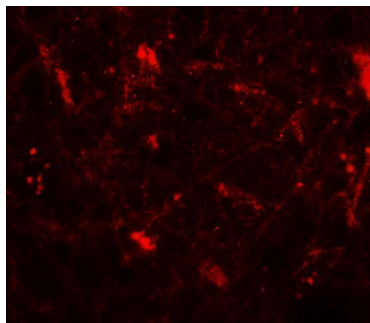
Anti-Corticoliberin CRH Antibody (A00629-2) Images



Western blot analysis of CRH in human placenta tissue lysate with CRH antibody at (A) 1 and (B) 2 ug/ml.



Immunohistochemistry of CRH in human brain tissue with CRH antibody at 5 ug/mL.



Immunofluorescence of CRH in human brain tissue with CRH antibody at 20 ug/mL.

Submit a product review to [Biocompare.com](https://www.biocompare.com)

Submit a review of this product to [Biocompare.com](https://www.biocompare.com) to receive a \$20 Amazon.com giftcard! Your reviews help your fellow scientists make the right decisions. Thank you for your contribution.



Anti-Corticoliberin CRH Antibody

For Research Use Only. Not for use in diagnostic procedures.