

## Anti-Sumo SUMO1 Antibody

Catalog Number: A00631

### About SUMO1

The sumo family of proteins is related both structurally and functionally to ubiquitin in that they are post-translationally attached to the e-amino group of a lysine residue of the substrate protein. This sumoylation plays a number of roles in DNA replication and repair, protein targeting to various subnuclear structures, and the regulation of numerous cellular processes including the inflammatory response in mammalian cells. Sumo was initially identified as a covalent modification of RanGAP1 in studies on nuclear import in mammalian cells. More recently, sumo has been shown to be involved in the regulation of transcription factors, possibly by enhancing their interactions with co-repressors. Sumo is also thought to play some role in the modulation of ubiquitin-mediated degradation of proteins by acting as an inhibitor. At least four different isoforms of sumo are known to exist; Sumo antibody will only recognize isoform 1.

### Overview

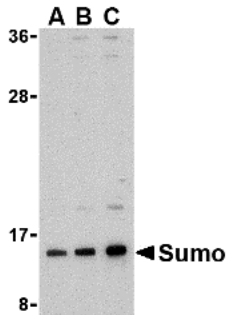
Product Name	Anti-Sumo SUMO1 Antibody
Reactive Species	Human, Mouse, Rat
Description	Boster Bio Anti-Sumo SUMO1 Antibody (Catalog # A00631). Tested in ELISA, WB, IHC-P, IF applications. This antibody reacts with Human, Mouse, Rat.
Application	ELISA, IF, IHC-P, WB
Clonality	Polyclonal
Formulation	Sumo Antibody is supplied in PBS containing 0.02% sodium azide.
Storage Instructions	Sumo antibody can be stored at 4°C for three months and -20°C, stable for up to one year. As with all antibodies care should be taken to avoid repeated freeze thaw cycles. Antibodies should not be exposed to prolonged high temperatures.
Host	Rabbit
Uniprot ID	P63165

### Technical Details

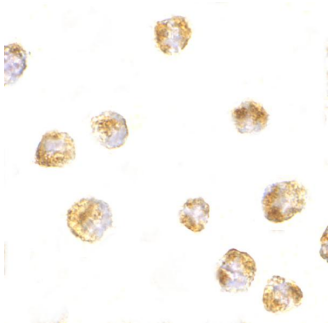
Immunogen	Sumo antibody was raised against a 14 amino acid synthetic peptide from near the amino terminus of human sumo. The immunogen is located within the first 50 amino acids of Sumo.
Predicted Reactive Species	Bovine, Chicken, Pig
Isotype	IgG
Form	Liquid
Concentration	1 mg/mL

Purification	Sumo Antibody is affinity chromatography purified via peptide column.
Suggested Dilutions	<p>Dilute the sample so that the expected range of concentrations fall within the detection range of this kit.</p> <p>If the expected range of concentration is unknown, a pilot test should be conducted to decide the optimal dilution ratio for your samples.</p> <p>Some PubMed article(s) citing the expression level of this target are as follows: Boster Bio's internal QC testing used Sumo antibody can be used for detection of sumo by Western blot at 0.5 - 2 <math>\mu</math>g/mL. Antibody can also be used for immunohistochemistry starting at 5 <math>\mu</math>g/mL. For immunofluorescence start at 20 <math>\mu</math>g/mL. Antibody validated: Western Blot in human samples; Immunocytochemistry in human samples and Immunofluorescence in human samples. All other applications and species not yet tested.</p> <p>For protocols, please visit <a href="https://www.bosterbio.com/protocol-and-troubleshooting/">https://www.bosterbio.com/protocol-and-troubleshooting/</a></p>

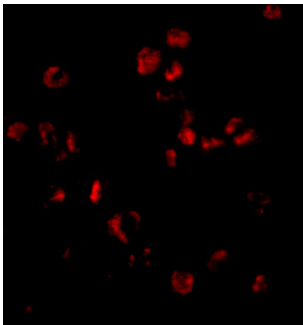
## Anti-Sumo SUMO1 Antibody (A00631) Images



Western blot analysis of sumo in HL-60 cell lysate with sumo antibody at (A) 0.5



Immunocytochemistry of Sumo in HL60 cells with Sumo antibody at 5 µg/mL.



Immunofluorescence of Sumo in HL60 cells with Sumo antibody at 20 µg/mL.

### Submit a product review to [Biocompare.com](https://www.biocompare.com)

Submit a review of this product to [Biocompare.com](https://www.biocompare.com) to receive a \$20 Amazon.com giftcard! Your reviews help your fellow scientists make the right decisions. Thank you for your contribution.



Anti-Sumo SUMO1 Antibody