

Anti-Partner and localizer of BRCA2 PALB2 Antibody

Catalog Number: A00639

About PALB2

The breast cancer early onset proteins BRCA1 and BRCA2 are central to the repair of DNA damage by homologous recombination and are strongly associated with inherited breast and ovarian cancer. The protein PALB2 is required for the localization of BRCA2 to sites of DNA damage and like BRCA1 and 2 is a breast cancer susceptibility gene. PALB2 is thought to function through directly binding to BRCA1, which allows the PALB2 protein to organize BRCA2 and the recombinase RAD51 at the site of DNA damage. Analysis of the BRCA1-PALB2-BRCA2-RAD51 network may allow predictions to be made of the responsiveness of a particular tumor to therapeutic treatments.

Overview

Product Name	Anti-Partner and localizer of BRCA2 PALB2 Antibody
Reactive Species	Human, Mouse, Rat
Description	Boster Bio Anti-Partner and localizer of BRCA2 PALB2 Antibody (Catalog # A00639). Tested in ELISA, WB applications. This antibody reacts with Human, Mouse, Rat.
Application	ELISA, WB
Clonality	Polyclonal
Formulation	PALB2 Antibody is supplied in PBS containing 0.02% sodium azide.
Storage Instructions	PALB2 antibody can be stored at 4°C for three months and -20°C, stable for up to one year. Avoid repeated freeze-thaw cycles. Antibodies should not be exposed to prolonged high temperatures.
Host	Rabbit
Uniprot ID	Q86YC2

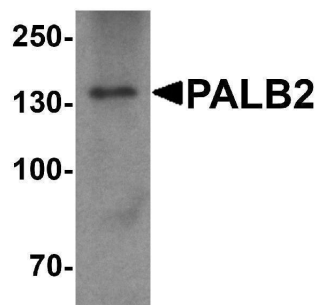
Technical Details

Immunogen	PALB2 antibody was raised against a 15 amino acid synthetic peptide from near the carboxy terminus of human PALB2. The immunogen is located within amino acids 940 - 990 of PALB2.
Predicted Reactive Species	Bovine, Chicken, Pig
Cross Reactivity	At least four isoforms of PALB2 are known to exist; this antibody will detect all four isoforms.
Isotype	IgG
Form	Liquid
Concentration	1 mg/mL
Purification	PALB2 Antibody is affinity chromatography purified via peptide column.

Suggested Dilutions

PALB2 antibody can be used for detection of PALB2 by Western blot at 1 - 2 ug/mL.
Antibody validated: Western Blot in human samples. All other applications and species not yet tested. Optimal dilutions for each application should be determined by the researcher.

Anti-Partner and localizer of BRCA2 PALB2 Antibody (A00639) Images



Western blot analysis of PALB2 in SK-N-SH cell lysate with PALB2 antibody at 1 ug/mL.

Submit a product review to Biocompare.com

Submit a review of this product to Biocompare.com to receive a \$20 Amazon.com giftcard! Your reviews help your fellow scientists make the right decisions. Thank you for your contribution.



Anti-Partner and localizer of BRCA2 PALB2 Antibody

For Research Use Only. Not for use in diagnostic procedures.