

## Anti-Protein jagged-1 JAG1 Antibody

Catalog Number: A00640

### About JAG1

The LIN-12/Notch family of transmembrane receptors plays a central role in development by regulating cell fate decisions (1). Ligands for Notch include JAG1, JAG2 and Delta. JAG1 is one of the DSL (Delta, Serrate, Lag2) transmembrane proteins that can activate Notch. It is involved in mammalian cardiovascular development and in cell-fate decisions during hematopoiesis (1,2). JAG1 is widely expressed in adult and fetal tissues and the mutation of the JAG1 gene is associated with Familial Tetralogy of Fallot (3). JAG1 expression is associated with prostate cancer metastasis and is up-regulated in cervical squamous cell carcinoma (4,5).

### Overview

Product Name	Anti-Protein jagged-1 JAG1 Antibody
Reactive Species	Human, Mouse, Rat
Description	Boster Bio Anti-Protein jagged-1 JAG1 Antibody (Catalog # A00640). Tested in ELISA, WB, IHC-P, IF applications. This antibody reacts with Human, Mouse, Rat.
Application	ELISA, IF, IHC-P, WB
Clonality	Polyclonal
Formulation	JAG1 antibody is supplied in PBS containing 0.02% sodium azide.
Storage Instructions	Antibody can be stored at 4°C up to one year. Antibodies should not be exposed to prolonged high temperatures.
Host	Rabbit
Uniprot ID	P78504

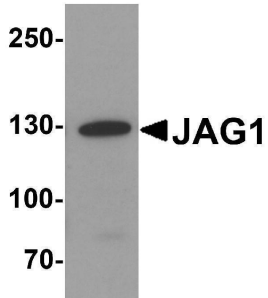
### Technical Details

Immunogen	JAG1 antibody was raised against a 19 amino acid peptide near the carboxy terminus of human JAG1. The immunogen is located within the last 50 amino acids of JAG1.
Predicted Reactive Species	Bovine, Chicken, Pig
Cross Reactivity	JAG1 antibody is human, mouse and rat reactive. At least two isoforms of JAG1 are known to exist; this antibody will detect both isoforms.
Isotype	IgG
Form	Liquid
Concentration	1 mg/mL
Purification	JAG1 antibody is affinity chromatography purified via peptide column.

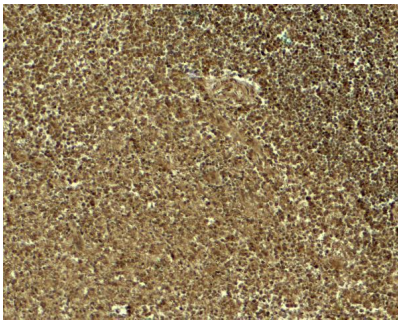
Suggested Dilutions

JAG1 antibody can be used for detection of JAG1 by Western blot at 1 - 2 ug/ml. Antibody can also be used for immunohistochemistry starting at 5 ug/mL. For immunofluorescence start at 20 ug/mL. Antibody validated: Western Blot in human samples; Immunohistochemistry in human samples and Immunofluorescence in human samples. All other applications and species not yet tested. Optimal dilutions for each application should be determined by the researcher.

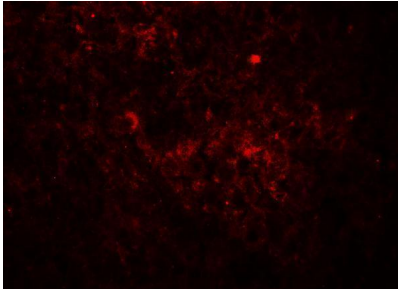
## Anti-Protein jagged-1 JAG1 Antibody (A00640) Images



Western blot analysis of JAG1 in HeLa cell lysate with JAG1 antibody at 1 ug/ml.



Immunohistochemistry of JAG1 in human spleen tissue with JAG1 antibody at 5 ug/ml.



Immunofluorescence of JAG1 in human spleen tissue with JAG1 antibody at 20 ug/ml.

### Submit a product review to [Biocompare.com](https://www.biocompare.com)

Submit a review of this product to [Biocompare.com](https://www.biocompare.com) to receive a \$20 Amazon.com giftcard! Your reviews help your fellow scientists make the right decisions. Thank you for your contribution.



Anti-Protein jagged-1 JAG1 Antibody

For Research Use Only. Not for use in diagnostic procedures.