

Anti-Cleaved-Factor Xa activated HC (I235) F10 Antibody

Catalog Number: A00641

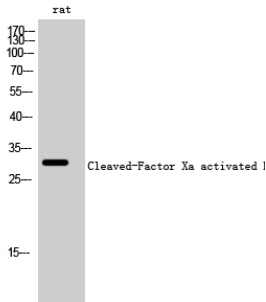
Overview

Product Name	Anti-Cleaved-Factor Xa activated HC (I235) F10 Antibody
Reactive Species	Human, Mouse, Rat
Description	Boster Bio Anti-Cleaved-Factor Xa activated HC (I235) F10 Antibody catalog # A00641. Tested in WB, ELISA applications. This antibody reacts with Human, Mouse, Rat.
Application	ELISA, WB
Clonality	Polyclonal
Formulation	Liquid in PBS containing 50% glycerol, 0.5% stabilizing protein and 0.02% sodium azide. *This antibody is supplied in a stabilized formulation. Compatibility with conjugation reactions depends on the chemistry of the conjugation method used. For conjugation methods that are not compatible with the stabilizing components present in this formulation, a carrier-free antibody format is required.
Storage Instructions	Store at -20°C for one year. For short term storage and frequent use, store at 4°C for up to one month. Avoid repeated freeze-thaw cycles.
Host	Rabbit
Uniprot ID	P00742

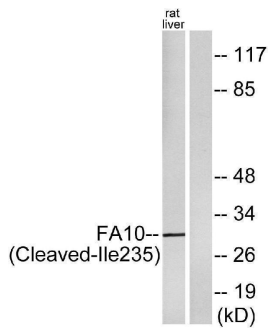
Technical Details

Immunogen	The antiserum was produced against synthesized peptide derived from human FA10. AA range:216-265
Cross Reactivity	No cross reactivity with other proteins.
Isotype	IgG
Form	Liquid
Concentration	1 mg/ml
Purification	Immunogen affinity purified
Suggested Dilutions	WB 1:500-1:2000 ELISA 1:20000

Anti-Cleaved-Factor Xa activated HC (I235) F10 Antibody (A00641) Images



Western Blot analysis of rat cells using Cleaved-Factor Xa activated HC (I235) Polyclonal Antibody



Western blot analysis of lysates from rat liver cells, using FA10 (activated heavy chain, Cleaved-Ile235) Antibody. The lane on the right is blocked with the synthesized peptide.

Submit a product review to [Biocompare.com](https://www.biocompare.com)

Submit a review of this product to [Biocompare.com](https://www.biocompare.com) to receive a \$20 Amazon.com giftcard! Your reviews help your fellow scientists make the right decisions. Thank you for your contribution.



Anti-Cleaved-Factor Xa activated HC (I235) F10 Antibody

For Research Use Only. Not for use in diagnostic procedures.