

Anti-DNA-PK (phospho-S2056) PRKDC Antibody

Catalog Number: A00645S2056

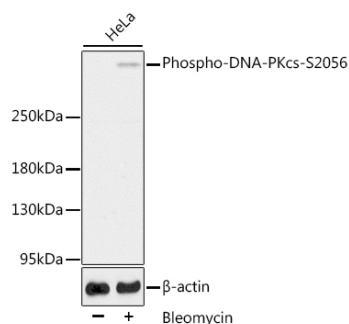
Overview

Product Name	Anti-DNA-PK (phospho-S2056) PRKDC Antibody
Reactive Species	Human, Mouse, Rat
Description	Boster Bio Anti-DNA-PK (phospho-S2056) PRKDC Antibody catalog # A00645S2056. Tested in WB,ICC/IF applications. This antibody reacts with Human,Mouse,Rat.
Application	IF, ICC, WB
Clonality	Polyclonal
Formulation	Rabbit IgG, 1mg/ml in PBS with 0.02% sodium azide, 50% glycerol, pH7.2
Storage Instructions	Store at -20°C for one year. For short term storage and frequent use, store at 4°C for up to one month. Avoid repeated freeze-thaw cycles.
Host	Rabbit
Uniprot ID	P78527

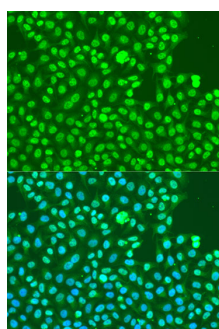
Technical Details

Immunogen	A synthetic phosphorylated peptide around S2056 of human DNA-PKcs(NP_008835.5).
Cross Reactivity	No cross reactivity with other proteins.
Isotype	IgG
Form	Liquid
Concentration	1 mg/ml
Purification	The antibody was affinity-purified from rabbit antiserum by affinity-chromatography using epitope-specific immunogen and the purity is > 95% (by SDS-PAGE).
Suggested Dilutions	WB: 1:500-1:2000 ICC/IF: 1:50-1:200

Anti-DNA-PK (phospho-S2056) PRKDC Antibody (A00645S2056) Images



Western blot analysis of extracts of HeLa cells, using Phospho-DNA-PKcs-S2056 antibody. Secondary antibody: HRP Goat Anti-Rabbit IgG at 1:10000 dilution. Lysates/proteins: 25ug per lane. Blocking buffer: 3% BSA.



Immunofluorescence analysis of U2OS cells using Phospho-DNA-PKcs-S2056 antibody at dilution of 1:100. Blue: DAPI for nuclear staining.

Submit a product review to [Biocompare.com](https://www.biocompare.com)

Submit a review of this product to [Biocompare.com](https://www.biocompare.com) to receive a \$20 Amazon.com giftcard! Your reviews help your fellow scientists make the right decisions. Thank you for your contribution.



Anti-DNA-PK (phospho-S2056) PRKDC Antibody

For Research Use Only. Not for use in diagnostic procedures.