

## Anti-PKA alpha/ beta/ gamma cat PRKACA Antibody

Catalog Number: A00653

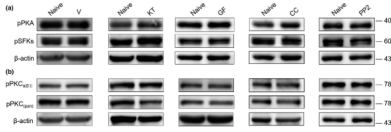
### Overview

Product Name	Anti-PKA alpha/ beta/ gamma cat PRKACA Antibody
Reactive Species	Human, Mouse, Pig, Rat
Description	Boster Bio Anti-PKA alpha/ beta/ gamma cat PRKACA Antibody catalog # A00653. Tested in WB, IHC, IF, ELISA applications. This antibody reacts with Human, Mouse, Rat, Pig.
Application	ELISA, IF, IHC, WB
Clonality	Polyclonal
Formulation	Liquid in PBS containing 50% glycerol, 0.5% stabilizing protein and 0.02% sodium azide. *This antibody is supplied in a stabilized formulation. Compatibility with conjugation reactions depends on the chemistry of the conjugation method used. For conjugation methods that are not compatible with the stabilizing components present in this formulation, a carrier-free antibody format is required.
Storage Instructions	Store at -20°C for one year. For short term storage and frequent use, store at 4°C for up to one month. Avoid repeated freeze-thaw cycles.
Host	Rabbit
Uniprot ID	P17612

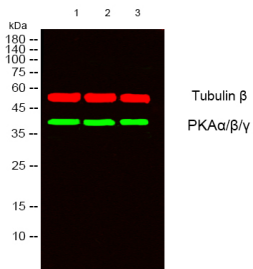
### Technical Details

Immunogen	The antiserum was produced against synthesized peptide derived from human PKA alpha/beta CAT. AA range:166-215
Cross Reactivity	No cross reactivity with other proteins.
Isotype	IgG
Form	Liquid
Concentration	1 mg/ml
Purification	Immunogen affinity purified
Suggested Dilutions	WB 1:500-1:2000 IHC 1:100-1:300 IF 1:200-1:1000 ELISA 1:20000

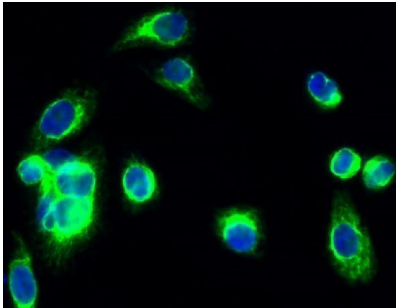
## Anti-PKA alpha/ beta/ gamma cat PRKACA Antibody (A00653) Images



Western blot analysis of lysates from 1) 22RV1, 2) HeLa, 3) COLO205 cells, (Green primary antibody was diluted at 1:1000, 4° over night, secondary antibody was diluted at 1:10000, 37° 1hour. (Red Tubulin beta Monoclonal Antibody (5G3) antibody was diluted at 1:5000 as loading control, 4° over night, secondary antibody was diluted at 1:10000, 37° 1hour.



Immunohistochemistry analysis of paraffin-embedded human colon carcinoma tissue, using PKA alpha/beta CAT Antibody. The picture on the right is blocked with the synthesized peptide.



Immunofluorescence analysis of HeLa cell. 1, PKA alpha/beta/gamma cat Polyclonal Antibody (green) was diluted at 1:200 (4° overnight). 2, Goat Anti Rabbit Alexa Fluor 488 was diluted at 1:1000 (room temperature, 50min). 3 DAPI (blue) 10min.

### Submit a product review to Biocompare.com

Submit a review of this product to Biocompare.com to receive a \$20 Amazon.com giftcard! Your reviews help your fellow scientists make the right decisions. Thank you for your contribution.



Anti-PKA alpha/ beta/ gamma cat PRKACA Antibody

For Research Use Only. Not for use in diagnostic procedures.