

Anti-ATF6 Antibody

Catalog Number: A00655-1

About ATF6

Disruptions of protein folding and maturation in the endoplasmic reticulum (ER) result in the activation of the unfolded protein response (UPR), an integrated cellular signaling pathway that transmits information from the ER lumen to the cytoplasm and nucleus. Activating transcription factor 6 (ATF6) as well as the ER-transmembrane protein kinases IRE1p and PERK are the major transducers of the UPR. ATF6 is an ER transmembrane protein that is normally bound to the ER chaperone GRP78, but upon ER stress is released from GRP78 and proteolytically cleaved to yield a cytosolic fragment which then migrates to the nucleus, and together with the transcription factor XBP-1, activates transcription of UPR-responsive genes. ATF6 has two isoforms (ATF6alpha and ATF6beta); only ATF6alpha is recognized by this antibody.

Overview

Product Name	Anti-ATF6 Antibody
Reactive Species	Human, Mouse
Description	Boster Bio Anti-ATF6 Antibody (Catalog # A00655-1). Tested in ELISA, WB, IHC-P, ICC, IF applications. This antibody reacts with Human, Mouse.
Application	ELISA, IF, IHC-P, ICC, WB
Clonality	Polyclonal
Formulation	ATF6 Antibody is supplied in PBS containing 0.02% sodium azide.
Storage Instructions	ATF6 antibody can be stored at 4°C for three months and -20°C, stable for up to one year. Avoid repeated freeze-thaw cycles. Antibodies should not be exposed to prolonged high temperatures.
Host	Rabbit
Uniprot ID	P18850

Technical Details

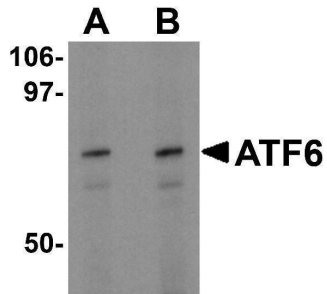
Immunogen	ATF6 antibody was raised against a 16 amino acid synthetic peptide from near the carboxy terminus of human ATF6. The immunogen is located within amino acids 470 - 520 of ATF6.
Predicted Reactive Species	Rat
Isotype	IgG
Form	Liquid
Concentration	1 mg/mL
Purification	ATF6 Antibody is affinity chromatography purified via peptide column.

Suggested Dilutions

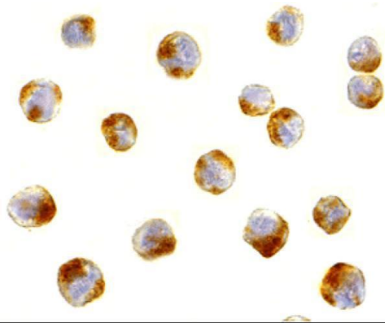
ATF6 antibody can be used for the detection of ATF6 by Western blot at 0.5 - 1 ug/mL. Antibody can also be used for immunohistochemistry starting at 5 ug/mL and immunocytochemistry starting at 10 ug/mL. For immunofluorescence start at 10 ug/mL.

Antibody validated: Western Blot in mouse samples; Immunohistochemistry in human samples; Immunocytochemistry in human samples and Immunofluorescence in human samples. All other applications and species not yet tested. Optimal dilutions for each application should be determined by the researcher.

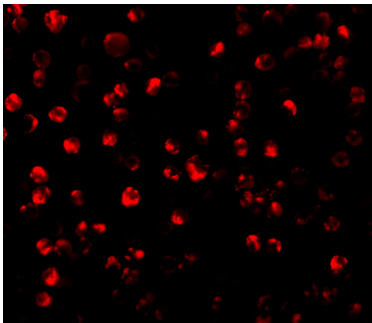
Anti-ATF6 Antibody (A00655-1) Images



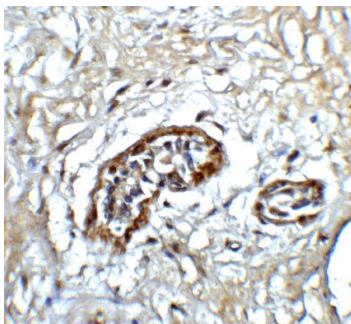
Western blot analysis of ATF6 in EL4 cell lysate with ATF6 antibody at (A) 0.5 and (B) 1 ug/mL.



Immunocytochemical staining of MCF7 cells using ATF6 antibody at 10 ug/mL.

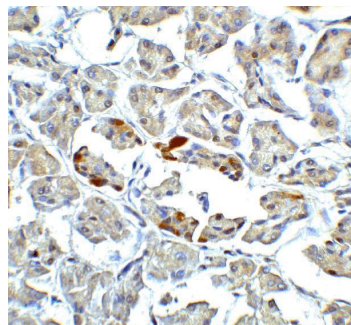
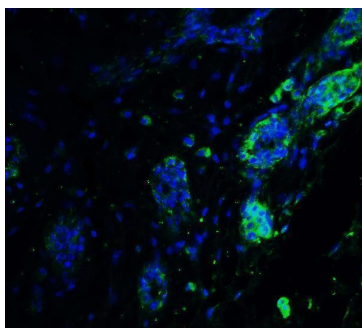


Immunofluorescence of ATF6 in MCF7 cells with ATF6 antibody at 10 ug/mL.

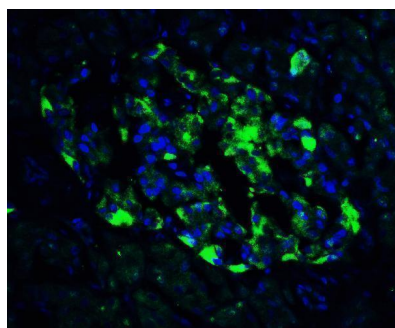


Immunohistochemistry of ATF6 in human breast tissue with ATF6 antibody at 5 ug/ml.

Immunofluorescence of ATF6 in human breast tissue with ATF6 antibody at 20 ug/ml. Green: ATF6 Antibody (A00655-1)
Blue: DAPI staining



Immunohistochemistry of ATF6 in human pancreas tissue with ATF6 antibody at 5 ug/ml.



Immunofluorescence of ATF6 in human pancreas tissue with ATF6 antibody at 20 ug/ml. Green: ATF6 Antibody (A00655-1)
Blue: DAPI staining

Submit a product review to Biocompare.com

Submit a review of this product to Biocompare.com to receive a \$20 Amazon.com giftcard! Your reviews help your fellow scientists make the right decisions. Thank you for your contribution.



Anti-ATF6 Antibody

For Research Use Only. Not for use in diagnostic procedures.