

Anti-ATF6 Antibody

Catalog Number: A00655-2

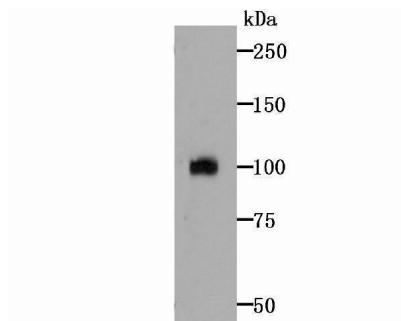
Overview

Product Name	Anti-ATF6 Antibody
Reactive Species	Human, Rat
Description	Boster Bio Anti-ATF6 Antibody catalog # A00655-2. Tested in WB,ICC,IHC,Flow Cytometry applications. This antibody reacts with Human,Rat.
Application	Flow Cytometry, IHC, ICC, WB
Clonality	Polyclonal
Formulation	Rabbit IgG, 1mg/ml in PBS with 0.02% sodium azide, 50% glycerol, pH7.2
Storage Instructions	Store at -20°C for one year. For short term storage and frequent use, store at 4°C for up to one month. Avoid repeated freeze-thaw cycles.
Host	Rabbit
Uniprot ID	P18850

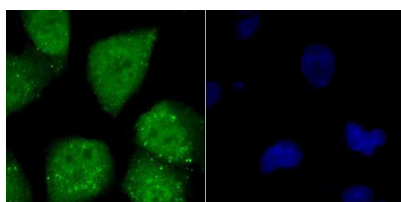
Technical Details

Immunogen	Recombinant protein within full sequence of human ATF6.
Cross Reactivity	No cross reactivity with other proteins.
Isotype	IgG
Form	Liquid
Concentration	1 mg/ml
Purification	ProA affinity purified
Suggested Dilutions	WB: 1:500-1:1,000 ICC: 1:50-1:200 IHC: 1:50-1:200 FC: 1:50-1:100

Anti-ATF6 Antibody (A00655-2) Images



Western blot analysis of ATF6 on Hela cell lysate using anti-ATF6 antibody at 1/500 dilution.



ICC staining ATF6 in HUVEC cells (green). The nuclear counter stain is DAPI (blue). Cells were fixed in paraformaldehyde, permeabilised with 0.25% Triton X100/PBS.

Submit a product review to Biocompare.com

Submit a review of this product to Biocompare.com to receive a \$20 Amazon.com giftcard! Your reviews help your fellow scientists make the right decisions. Thank you for your contribution.



Anti-ATF6 Antibody

For Research Use Only. Not for use in diagnostic procedures.