

Anti-Phospho-p68 RNA Helicase (Y593) DDX5 Antibody

Catalog Number: A00670Y593-1

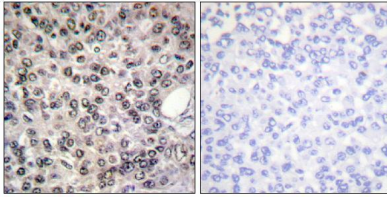
Overview

| | |
|----------------------|--|
| Product Name | Anti-Phospho-p68 RNA Helicase (Y593) DDX5 Antibody |
| Reactive Species | Human, Mouse, Rat |
| Description | Boster Bio Anti-Phospho-p68 RNA Helicase (Y593) DDX5 Antibody catalog # A00670Y593-1. Tested in WB, IHC, IF, ELISA applications. This antibody reacts with Human, Mouse, Rat. |
| Application | ELISA, IF, IHC, WB |
| Clonality | Polyclonal |
| Formulation | Liquid in PBS containing 50% glycerol, 0.5% stabilizing protein and 0.02% sodium azide. *This antibody is supplied in a stabilized formulation. Compatibility with conjugation reactions depends on the chemistry of the conjugation method used. For conjugation methods that are not compatible with the stabilizing components present in this formulation, a carrier-free antibody format is required. |
| Storage Instructions | Store at -20°C for one year. For short term storage and frequent use, store at 4°C for up to one month. Avoid repeated freeze-thaw cycles. |
| Host | Rabbit |
| Uniprot ID | P17844 |

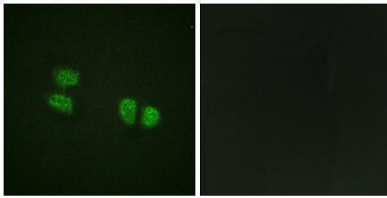
Technical Details

| | |
|---------------------|---|
| Immunogen | The antiserum was produced against synthesized peptide derived from human DDX5/DEAD-box Protein 5 around the phosphorylation site of Tyr593. AA range:565-614 |
| Cross Reactivity | No cross reactivity with other proteins. |
| Isotype | IgG |
| Form | Liquid |
| Concentration | 1 mg/ml |
| Purification | The antibody was affinity-purified from rabbit antiserum by affinity-chromatography using epitope-specific immunogen. |
| Suggested Dilutions | WB 1:500-1:2000 IHC 1:100-1:300 IF 1:200-1:1000 ELISA 1:10000 |

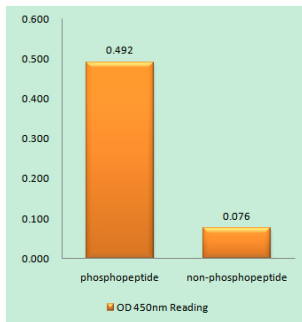
Anti-Phospho-p68 RNA Helicase (Y593) DDX5 Antibody (A00670Y593-1) Images



Immunohistochemistry analysis of paraffin-embedded human breast carcinoma, using DDX5/DEAD-box Protein 5 (Phospho-Tyr593) Antibody. The picture on the right is blocked with the phospho peptide.



Immunofluorescence analysis of HeLa cells, using DDX5/DEAD-box Protein 5 (Phospho-Tyr593) Antibody. The picture on the right is blocked with the phospho peptide.



Enzyme-Linked Immunosorbent Assay (Phospho-ELISA) for Immunogen Phosphopeptide (Phospho-left) and Non-Phosphopeptide (Phospho-right), using DDX5/DEAD-box Protein 5 (Phospho-Tyr593) Antibody

Submit a product review to Biocompare.com

Submit a review of this product to Biocompare.com to receive a \$20 Amazon.com giftcard! Your reviews help your fellow scientists make the right decisions. Thank you for your contribution.



Anti-Phospho-p68 RNA Helicase (Y593) DDX5 Antibody

For Research Use Only. Not for use in diagnostic procedures.