

Anti-SGK1 Antibody

Catalog Number: A00673-1

About SGK1

Serum and glucocorticoid-regulated protein kinase 1 (SGK1) is a member of the AGC family of serine/threonine kinases that plays an important role in cellular stress response and cell survival. SGK1 is transcriptionally activated by numerous stimuli, including serum, glucocorticoids, osmotic stress, and hormones. SGK1 functions as a regulator of cell survival and ion channels and transporters such as ENaC or KCNA3/Kv1.3. It phosphorylates and negatively regulates pro-apoptotic FOXO3A. SGK1 is thought to play an essential function in nephropathy and cardiovascular development.

Overview

Product Name	Anti-SGK1 Antibody
Reactive Species	Human, Mouse, Rat
Description	Boster Bio Anti-SGK1 Antibody (Catalog # A00673-1). Tested in ELISA, WB, IHC-P, IF applications. This antibody reacts with Human, Mouse, Rat.
Application	ELISA, IF, IHC-P, WB
Clonality	Polyclonal
Formulation	SGK1 Antibody is supplied in PBS containing 0.02% sodium azide.
Storage Instructions	SGK1 antibody can be stored at 4 °C for 3 months and -20 °C stable for one year. Avoid repeated freeze-thaw cycles. Antibodies should not be exposed to prolonged high temperatures.
Host	Rabbit
Uniprot ID	O00141

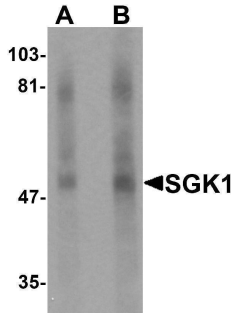
Technical Details

Immunogen	SGK1 antibody was raised against an 18 amino acid synthetic peptide near the carboxy terminus of human SGK1. The immunogen is located within amino acids 370 - 420 of SGK1.
Predicted Reactive Species	Bovine, Chicken, Rabbit
Cross Reactivity	SGK1 antibody is predicted to not cross-react with other SGK protein family members. At least five isoforms are known to exist
Isotype	IgG
Form	Liquid
Concentration	1 mg/mL
Purification	SGK1 Antibody is affinity chromatography purified via peptide column.

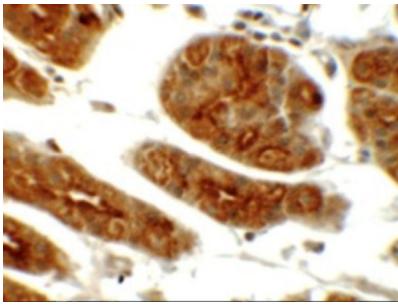
Suggested Dilutions

SGK1 antibody can be used for detection of SGK1 by Western blot at 1 - 2 ug/mL. Antibody can also be used for immunohistochemistry starting at 5 ug/mL. For immunofluorescence start at 20 ug/mL. Antibody validated: Western Blot in human samples; Immunohistochemistry in human samples and Immunofluorescence in human samples. All other applications and species not yet tested. Optimal dilutions for each application should be determined by the researcher.

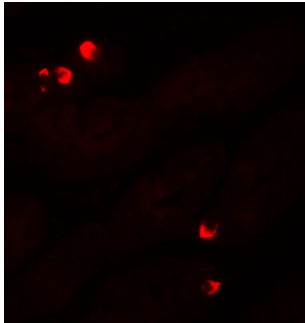
Anti-SGK1 Antibody (A00673-1) Images



Western blot analysis of SGK1 in human stomach tissue lysate with SGK1 antibody at (A) 1 and (B) 2 ug/mL.



Immunohistochemistry of SGK1 in human stomach tissue with SGK1 antibody at 5 ug/mL.



Immunofluorescence of SGK1 in human stomach tissue with SGK1 antibody at 20 ug/mL.

1 Publications Citing This Product

1. PubMed ID: 33063281, Liu BW,Zhang J,Hong YS,Li NB,Liu Y,Zhang M,Wu WY,Zheng H,Lampert A,Zhang XW.NGF-Induced Nav1.7 Upregulation Contributes to Chronic Post-surgical Pain by Activating SGK1-Dependent Nedd4-2 Phosphorylation.Mol Neurobiol.2020 Oct 16.doi:10.1007/s12035-020-021

Visit bosterbio.com/anti-sgk1-antibody-a00673-1-boster.html to see all 1 publications.

Submit a product review to Biocompare.com

Submit a review of this product to Biocompare.com to receive a \$20 Amazon.com giftcard! Your reviews help your fellow scientists make the right decisions. Thank you for your contribution.



For Research Use Only. Not for use in diagnostic procedures.