

Anti-AR-Beta 1 (A302) ADRB1 Antibody

Catalog Number: A00675

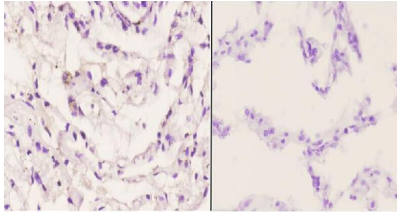
Overview

Product Name	Anti-AR-Beta 1 (A302) ADRB1 Antibody
Reactive Species	Human, Mouse, Rat
Description	Boster Bio Anti-AR-Beta 1 (A302) ADRB1 Antibody catalog # A00675. Tested in IHC,IF applications. This antibody reacts with Human,Mouse,Rat.
Application	IF, IHC
Clonality	Polyclonal
Formulation	Rabbit IgG, 1mg/ml in PBS with 0.02% sodium azide, 50% glycerol, pH7.2
Storage Instructions	Store at -20°C for one year. For short term storage and frequent use, store at 4°C for up to one month. Avoid repeated freeze-thaw cycles.
Host	Rabbit
Uniprot ID	P08588

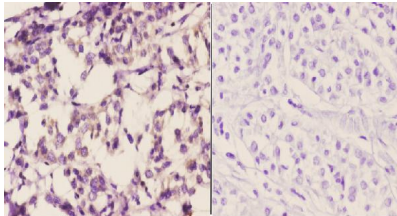
Technical Details

Immunogen	Synthetic peptide, corresponding to amino acids 261-310 of Human AR-beta1.
Cross Reactivity	No cross reactivity with other proteins.
Isotype	IgG
Form	Liquid
Concentration	1 mg/ml
Purification	The antibody was affinity-purified from rabbit antiserum by affinity-chromatography using epitope-specific immunogen and the purity is > 95% (by SDS-PAGE).
Suggested Dilutions	IHC: 1:50-1:200 IF: 1:50-1:200

Anti-AR-Beta 1 (A302) ADRB1 Antibody (A00675) Images



Immunohistochemistry (IHC) analyzes of AR-beta1 (A302) pAb in paraffin-embedded human lung carcinoma tissue at 1:50, showing cytoplasmic and nucleus staining. Negative control (the right) Using PBS instead of primary antibody, secondary antibody is Goat Anti-Rabbit IgG-biotin followed by avidin-peroxidase.



Immunohistochemistry (IHC) analyzes of AR-beta1 (A302) pAb in paraffin-embedded human liver carcinoma tissue at 1:50, showing cytoplasmic and nucleus staining. Negative control (the right) Using PBS instead of primary antibody, secondary antibody is Goat Anti-Rabbit IgG-biotin followed by avidin-peroxidase.

Submit a product review to [Biocompare.com](https://www.biocompare.com)

Submit a review of this product to [Biocompare.com](https://www.biocompare.com) to receive a \$20 Amazon.com giftcard! Your reviews help your fellow scientists make the right decisions. Thank you for your contribution.



Anti-AR-Beta 1 (A302) ADRB1 Antibody

For Research Use Only. Not for use in diagnostic procedures.