

Anti-HSP27 (phospho-S15) HSPB1 Antibody

Catalog Number: A00676S15

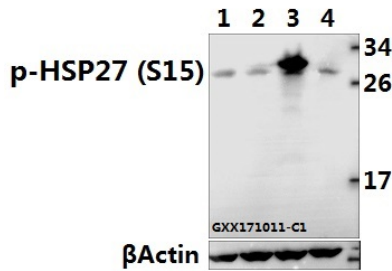
Overview

Product Name	Anti-HSP27 (phospho-S15) HSPB1 Antibody
Reactive Species	Human, Mouse, Rat
Description	Boster Bio Anti-HSP27 (phospho-S15) HSPB1 Antibody catalog # A00676S15. Tested in WB,IHC,IP applications. This antibody reacts with Human,Mouse,Rat.
Application	IP, IHC, WB
Clonality	Polyclonal
Formulation	Rabbit IgG, 1mg/ml in PBS with 0.02% sodium azide, 50% glycerol, pH7.2
Storage Instructions	Store at -20°C for one year. For short term storage and frequent use, store at 4°C for up to one month. Avoid repeated freeze-thaw cycles.
Host	Rabbit
Uniprot ID	P04792

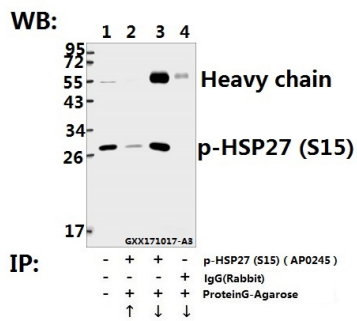
Technical Details

Immunogen	Synthetic phosphopeptide derived from human HSP27 around the phosphorylation site of Serine 15.
Cross Reactivity	No cross reactivity with other proteins.
Isotype	IgG
Form	Liquid
Concentration	1 mg/ml
Purification	The antibody was affinity-purified from rabbit antiserum by affinity-chromatography using epitope-specific immunogen and the purity is > 95% (by SDS-PAGE).
Suggested Dilutions	WB: 1:500-1:1000 IHC: 1:50-1:200 IP: 1:10-1:100

Anti-HSP27 (phospho-S15) HSPB1 Antibody (A00676S15) Images



Western blot (WB) analysis of HSP27 (phospho-S15) pAb at 1:500 dilution Lane1:L02 whole cell lysate Lane2:SGC7901 whole cell lysate Lane3:HEK293T transfected with pCDNA3.1-Flag-HSP27 whole cell lysate Lane4:HEK293T whole cell lysate



Immunoprecipitation of L02 whole cell lysate using HSP27 (phospho-S15) pAb (Sepharose Bead Conjugate) #BD0047(lane 2 and lane 3) and Nonspecific IgG Control (Sepharose Bead Conjugate)#BD0047 (lane 4) .Lane 1 is 20% input. The western blot was probed using HSP27 (phospho-S15) pAb #AP0245. "↑"supernatant; "↓"deposition

Submit a product review to Biocompare.com

Submit a review of this product to Biocompare.com to receive a \$20 Amazon.com giftcard! Your reviews help your fellow scientists make the right decisions. Thank you for your contribution.



Anti-HSP27 (phospho-S15) HSPB1 Antibody

For Research Use Only. Not for use in diagnostic procedures.