

Anti-PLCG1 Antibody

Catalog Number: A00677-1

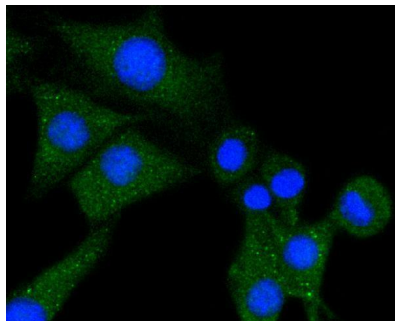
Overview

Product Name	Anti-PLCG1 Antibody
Reactive Species	Human, Mouse, Rat
Description	Boster Bio Anti-PLCG1 Antibody catalog # A00677-1. Tested in WB applications. This antibody reacts with Human,Mouse,Rat.
Application	WB
Clonality	Polyclonal
Formulation	Rabbit IgG, 1mg/ml in PBS with 0.02% sodium azide, 50% glycerol, pH7.2
Storage Instructions	Store at -20°C for one year. For short term storage and frequent use, store at 4°C for up to one month. Avoid repeated freeze-thaw cycles.
Host	Rabbit
Uniprot ID	P19174

Technical Details

Immunogen	A synthetic peptide of human gamma 1 (PLCG1)(NP_002651.2).
Cross Reactivity	No cross reactivity with other proteins.
Isotype	IgG
Form	Liquid
Concentration	1 mg/ml
Purification	ProA affinity purified
Suggested Dilutions	WB: 1:500-1:2000

Anti-PLCG1 Antibody (A00677-1) Images



Western blot analysis of extracts of various cell lines, using PLC gamma 1) antibody at 1:1000 dilution. Secondary antibody: HRP Goat Anti-Rabbit IgG at 1:10000 dilution. Lysates/proteins: 25ug per lane. Blocking buffer: 3% nonfat dry milk in TBST. Detection: ECL Basic Kit .Exposure time: 90s.

Submit a product review to Biocompare.com

Submit a review of this product to Biocompare.com to receive a \$20 Amazon.com giftcard! Your reviews help your fellow scientists make the right decisions. Thank you for your contribution.



Anti-PLCG1 Antibody

For Research Use Only. Not for use in diagnostic procedures.