

Anti-PLC Gamma 1 (phospho-Y1253) PLCG1 Antibody

Catalog Number: A00677Y1253

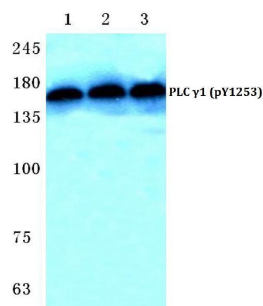
Overview

Product Name	Anti-PLC Gamma 1 (phospho-Y1253) PLCG1 Antibody
Reactive Species	Human, Mouse, Rat
Description	Boster Bio Anti-PLC Gamma 1 (phospho-Y1253) PLCG1 Antibody catalog # A00677Y1253. Tested in WB, ICC applications. This antibody reacts with Human, Mouse, Rat.
Application	ICC, WB
Clonality	Polyclonal
Formulation	Rabbit IgG, 1mg/ml in PBS with 0.02% sodium azide, 50% glycerol, pH7.2
Storage Instructions	Store at -20°C for one year. For short term storage and frequent use, store at 4°C for up to one month. Avoid repeated freeze-thaw cycles.
Host	Rabbit
Uniprot ID	P19174

Technical Details

Immunogen	Synthetic phosphopeptide derived from human PLC gamma1 around the phosphorylation site of Tyrosine 1253.
Cross Reactivity	No cross reactivity with other proteins.
Isotype	IgG
Form	Liquid
Concentration	1 mg/ml
Purification	The antibody was affinity-purified from rabbit antiserum by affinity-chromatography using epitope-specific immunogen and the purity is > 95% (by SDS-PAGE).
Suggested Dilutions	WB: 1:500-1:1000 ICC: 1:50-1:200

Anti-PLC Gamma 1 (phospho-Y1253) PLCG1 Antibody (A00677Y1253) Images



Western blot (WB) analysis of p-PLC gamma1 (Y1253) polyclonal antibody at 1:500 dilution Lane1:MCF-7 cell lysate treated with EGF(0.1ng/ML,30mins) Lane2:Mouse liver tissue lysate Lane3:H9C2 cell lysate treated with EGF(0.1ng/ML,30mins)

Submit a product review to Biocompare.com

Submit a review of this product to Biocompare.com to receive a \$20 Amazon.com giftcard! Your reviews help your fellow scientists make the right decisions. Thank you for your contribution.



Anti-PLC Gamma 1 (phospho-Y1253) PLCG1 Antibody

For Research Use Only. Not for use in diagnostic procedures.