

Anti-PLC Gamma 1 (phospho-Y783) PLCG1 Antibody

Catalog Number: A00677Y783

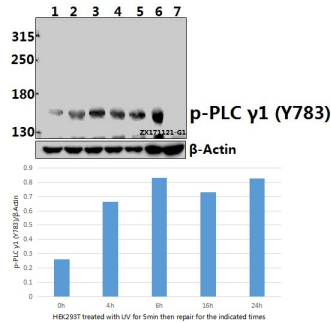
Overview

Product Name	Anti-PLC Gamma 1 (phospho-Y783) PLCG1 Antibody
Reactive Species	Human, Mouse, Rat
Description	Boster Bio Anti-PLC Gamma 1 (phospho-Y783) PLCG1 Antibody catalog # A00677Y783. Tested in WB,IHC applications. This antibody reacts with Human,Mouse,Rat.
Application	IHC, WB
Clonality	Polyclonal
Formulation	Rabbit IgG, 1mg/ml in PBS with 0.02% sodium azide, 50% glycerol, pH7.2
Storage Instructions	Store at -20°C for one year. For short term storage and frequent use, store at 4°C for up to one month. Avoid repeated freeze-thaw cycles.
Host	Rabbit
Uniprot ID	P19174

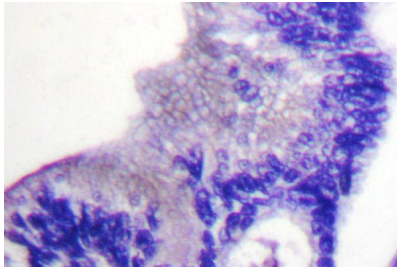
Technical Details

Immunogen	Synthetic phosphopeptide derived from human PLC gamma1 around the phosphorylation site of Tyrosine 783.
Cross Reactivity	No cross reactivity with other proteins.
Isotype	IgG
Form	Liquid
Concentration	1 mg/ml
Purification	The antibody was affinity-purified from rabbit antiserum by affinity-chromatography using epitope-specific immunogen and the purity is > 95% (by SDS-PAGE).
Suggested Dilutions	WB: 1:500-1:1000

Anti-PLC Gamma 1 (phospho-Y783) PLCG1 Antibody (A00677Y783) Images



Western blot (WB) analysis of p-PLC gamma1 (Y783) pAb at 1:500 dilution Lane1:HEK293T whole cell lysate(40ug) Lane2:HEK293T treated with UV for 5 minutes then repair for 4 hours whole cell lysate(40ug) Lane3:HEK293T treated with UV for 5 minutes then repair for 6 hours whole cell lysate(40ug) Lane4:HEK293T treated with UV for 5 minutes then repair for 16 hours whole cell lysate(40ug) Lane5:HEK293T treated with UV for 5 minutes then repair for 24 hours whole cell lysate(40ug) Lane6:C6 whole cell lysate(40ug) Lane7:The Kidney tissue lysate of Mouse(40ug)



Immunohistochemistry (IHC) analyzes of p-PLCG1 (Y783) pAb in paraffin-embedded human breast carcinoma tissue.

Submit a product review to Biocompare.com

Submit a review of this product to Biocompare.com to receive a \$20 Amazon.com giftcard! Your reviews help your fellow scientists make the right decisions. Thank you for your contribution.



Anti-PLC Gamma 1 (phospho-Y783) PLCG1 Antibody

For Research Use Only. Not for use in diagnostic procedures.