

Anti-Phospho-PLC gamma (Y783) PLCG1 Antibody

Catalog Number: A00677Y783-1

About PLCG1

Mediates the production of the second messenger molecules diacylglycerol (DAG) and inositol 1,4,5-trisphosphate (IP3). Plays an important role in the regulation of intracellular signaling cascades. Becomes activated in response to ligand-mediated activation of receptor-type tyrosine kinases, such as PDGFRA, PDGFRB, FGFR1, FGFR2, FGFR3 and FGFR4. Plays a role in actin reorganization and cell migration.

Denis Tvorogov, J. Cell Sci., Feb 2005; 118: 601 - 610.

Brenda J. Irvin, Mol. Cell. Biol., Dec 2000; 20: 9149 - 9161.

Benoit Poulin, J. Biol. Chem., Feb 2000; 275: 6411.

Ichiro Nakamura, J. Cell Biol., Jan 2001; 152: 361.

Overview

Product Name	Anti-Phospho-PLC gamma (Y783) PLCG1 Antibody
Reactive Species	Human, Monkey, Mouse, Rat
Description	Boster Bio Anti-Phospho-PLC gamma (Y783) PLCG1 Antibody catalog # A00677Y783-1. Tested in ELISA, IHC, WB applications. This antibody reacts with Human, Monkey, Mouse, Rat.
Application	ELISA, IHC, WB
Clonality	Polyclonal
Formulation	Liquid in PBS containing 50% glycerol, 0.5% BSA and 0.02% sodium azide.
Storage Instructions	Store at -20°C for one year. For short term storage and frequent use, store at 4°C for up to one month. Avoid repeated freeze-thaw cycles.
Host	Rabbit
Uniprot ID	P19174

Technical Details

Immunogen	Synthesized peptide derived from human PLC gamma1 around the phosphorylation site of Y783.
Predicted Reactive Species	Boar, Bovine, Canine, Golden Hamster
Cross Reactivity	No cross reactivity with other proteins.
Isotype	IgG
Form	Liquid
Concentration	1 mg/ml

Purification	The antibody was affinity-purified from rabbit antiserum by affinity-chromatography using epitope-specific immunogen.
Suggested Dilutions	<p>Dilute the sample so that the expected range of concentrations fall within the detection range of this kit.</p> <p>If the expected range of concentration is unknown, a pilot test should be conducted to decide the optimal dilution ratio for your samples.</p> <p>Some PubMed article(s) citing the expression level of this target are as follows:</p> <p>Boster Bio's internal QC testing used:</p> <p>WB 1:500-1:2000</p> <p>IHC 1:100-1:300</p> <p>ELISA 1:10000</p>

Anti-Phospho-PLC gamma (Y783) PLCG1 Antibody (A00677Y783-1) Images

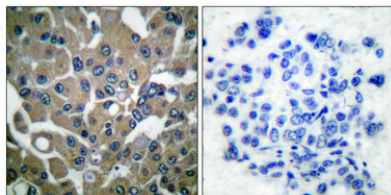


Figure 2. Immunohistochemistry validation of PLCG1 using Anti-Phospho-PLC gamma (Y783) PLCG1 Antibody (A00677Y783-1).

Immunohistochemical analysis of paraffin-embedded Human breast cancer. Antibody was diluted at 1:100 (4°C)



Figure 1. Western blotting validation for Anti-Phospho-PLC gamma (Y783) PLCG1 Antibody A00677Y783-1

Western Blot (WB) analysis of specific cells using Phospho-PLC gamma1 (Y783) polyclonal antibody. Electrophoresis was performed on a SDS-PAGE gel. To determine SDS-PAGE gel concentration

Submit a product review to Biocompare.com

Submit a review of this product to Biocompare.com to receive a \$20 Amazon.com giftcard! Your reviews help your fellow scientists make the right decisions. Thank you for your contribution.



Anti-Phospho-PLC gamma (Y783) PLCG1 Antibody