

Anti-EphB4 (E601) Antibody

Catalog Number: A00690-2

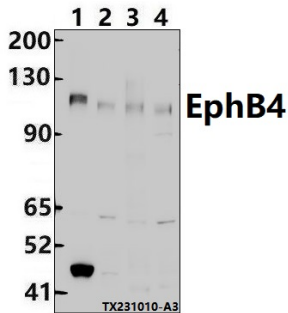
Overview

Product Name	Anti-EphB4 (E601) Antibody
Reactive Species	Human, Mouse, Rat
Description	Boster Bio Anti-EphB4 (E601) Antibody catalog # A00690-2. Tested in WB,IHC,IF applications. This antibody reacts with Human,Mouse,Rat.
Application	IF, IHC, WB
Clonality	Polyclonal
Formulation	Rabbit IgG, 1mg/ml in PBS with 0.02% sodium azide, 50% glycerol, pH7.2
Storage Instructions	Store at -20°C for one year. For short term storage and frequent use, store at 4°C for up to one month. Avoid repeated freeze-thaw cycles.
Host	Rabbit
Uniprot ID	P54760

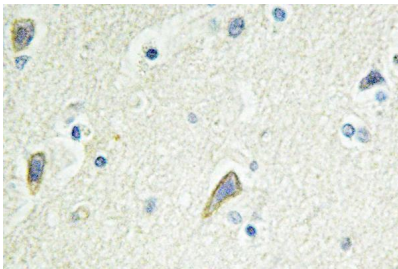
Technical Details

Immunogen	Synthetic peptide, corresponding to Human EphB4.
Cross Reactivity	No cross reactivity with other proteins.
Isotype	IgG
Form	Liquid
Concentration	1 mg/ml
Purification	The antibody was affinity-purified from rabbit antiserum by affinity-chromatography using epitope-specific immunogen and the purity is > 95% (by SDS-PAGE).
Suggested Dilutions	WB: 1:500-1:1000 IHC: 1:50-1:200 IF: 1:50-1:200

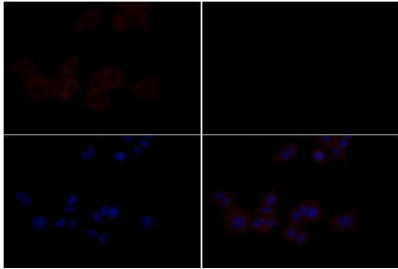
Anti-EphB4 (E601) Antibody (A00690-2) Images



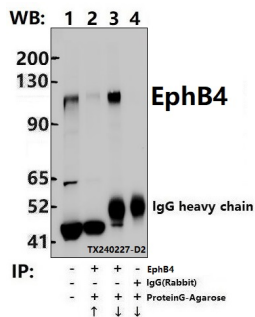
Western blot (WB) analysis of EphB4 (E601) polyclonal antibody at 1:500 dilution Lane1:MCF-7 whole cell lysate(30ug) Lane2:HepG2 whole cell lysate(30ug) Lane3:3T3-L1 whole cell lysate(30ug) Lane4:PC12 whole cell lysate(30ug)



Immunohistochemistry (IHC) analyzes of EphB4 (E601) pAb in paraffin-embedded human brain tissue.



Immunofluorescence analysis of MCF-7 cells using EphB4 (E601) pAb at dilution of 1:200 (40x lens).



Immunoprecipitation of MCF-7 cell lysates using EphB4 pAb (Sepharose Bead Conjugate)#BD0048 (lane 2 and lane 3) and Nonspecific IgG Control (Sepharose Bead Conjugate)#BD0048 (lane 4) .Lane 1 is 30% input. The western blot was probed using EphB4 pAb.

Submit a product review to [Biocompare.com](https://www.biocompare.com)

Submit a review of this product to [Biocompare.com](https://www.biocompare.com) to receive a \$20 Amazon.com giftcard! Your reviews help your fellow scientists make the right decisions. Thank you for your contribution.



Anti-EphB4 (E601) Antibody

For Research Use Only. Not for use in diagnostic procedures.