

Anti-Cleaved-Plasminogen HC A short form (V98) PLG Antibody

Catalog Number: A00702

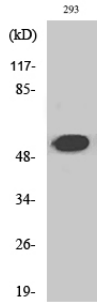
Overview

Product Name	Anti-Cleaved-Plasminogen HC A short form (V98) PLG Antibody
Reactive Species	Human, Mouse, Rat
Description	Boster Bio Anti-Cleaved-Plasminogen HC A short form (V98) PLG Antibody catalog # A00702. Tested in WB, ELISA applications. This antibody reacts with Human, Mouse, Rat.
Application	ELISA, WB
Clonality	Polyclonal
Formulation	Liquid in PBS containing 50% glycerol, 0.5% stabilizing protein and 0.02% sodium azide. *This antibody is supplied in a stabilized formulation. Compatibility with conjugation reactions depends on the chemistry of the conjugation method used. For conjugation methods that are not compatible with the stabilizing components present in this formulation, a carrier-free antibody format is required.
Storage Instructions	Store at -20°C for one year. For short term storage and frequent use, store at 4°C for up to one month. Avoid repeated freeze-thaw cycles.
Host	Rabbit
Uniprot ID	P00747

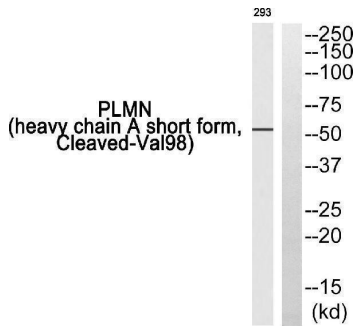
Technical Details

Immunogen	The antiserum was produced against synthesized peptide derived from human PLMN. AA range:79-128
Cross Reactivity	No cross reactivity with other proteins.
Isotype	IgG
Form	Liquid
Concentration	1 mg/ml
Purification	Immunogen affinity purified
Suggested Dilutions	WB 1:500-1:2000 ELISA 1:10000

Anti-Cleaved-Plasminogen HC A short form (V98) PLG Antibody (A00702) Images



Western Blot analysis of various cells using Cleaved-Plasminogen HC A short form (V98) Polyclonal Antibody



Western blot analysis of PLMN (heavy chain A short form, Cleaved-Val98) Antibody. The lane on the right is blocked with the PLMN (heavy chain A short form, Cleaved-Val98) peptide.

Submit a product review to Biocompare.com

Submit a review of this product to Biocompare.com to receive a \$20 Amazon.com giftcard! Your reviews help your fellow scientists make the right decisions. Thank you for your contribution.



Anti-Cleaved-Plasminogen HC A short form (V98) PLG Antibody

For Research Use Only. Not for use in diagnostic procedures.