

## Anti-Plasminogen/PLG Antibody Picoband®

Catalog Number: A00702-1

### About PLG

Plasmin is an important enzyme present in blood that degrades many blood plasma proteins, including fibrin clots. It is mapped to 6q26. The degradation of fibrin is termed fibrinolysis. In humans, the plasmin protein is encoded by the PLG gene. The protein encoded by this gene is a secreted blood zymogen that is activated by proteolysis and converted to plasmin and angiostatin. Plasmin dissolves fibrin in blood clots and is an important protease in many other cellular processes while angiostatin inhibits angiogenesis. Defects in this gene are likely a cause of thrombophilia and ligneous conjunctivitis. Two transcript variants encoding different isoforms have been found for this gene.

### Overview

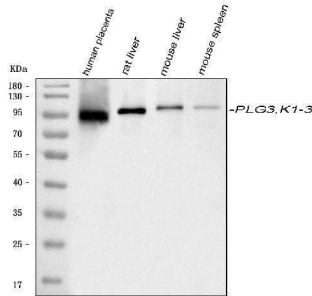
Product Name	Anti-Plasminogen/PLG Antibody Picoband®
Reactive Species	Human, Mouse, Rat
Description	Boster Bio Anti-Plasminogen/PLG Antibody Picoband® catalog # A00702-1. Tested in ELISA, WB applications. This antibody reacts with Human, Mouse, Rat. The brand Picoband indicates this is a premium antibody that guarantees superior quality, high affinity, and strong signals with minimal background in Western blot applications. Only our best-performing antibodies are designated as Picoband, ensuring unmatched performance.
Application	ELISA, WB
Clonality	Polyclonal
Formulation	Each vial contains 4mg Trehalose, 0.9mg NaCl, 0.2mg Na <sub>2</sub> HPO <sub>4</sub> , 0.05mg NaN <sub>3</sub> .
Storage Instructions	Store at -20°C for one year from date of receipt. After reconstitution, at 4°C for one month. It can also be aliquotted and stored frozen at -20°C for six months. Avoid repeated freeze-thaw cycles.
Host	Rabbit
Uniprot ID	P00747

### Technical Details

Immunogen	E.coli-derived human Plasminogen/PLG recombinant protein (Position: V98-P356).
Recommended Detection Systems	Boster recommends Enhanced Chemiluminescent Kit with anti-Rabbit IgG (EK1002) for Western blot.
Cross Reactivity	No cross-reactivity with other proteins.
Isotype	Rabbit IgG
Form	Lyophilized
Concentration	Adding 0.2 ml of distilled water will yield a concentration of 500 ug/ml.

Purification	Immunogen affinity purified.
Suggested Dilutions	Western blot, 0.1-0.5ug/ml, Human, Mouse, Rat ELISA 0.1-0.5ug/ml, Human

## Anti-Plasminogen/PLG Antibody Picoband® (A00702-1) Images



Western blot analysis of PLG using anti-PLG antibody (A00702-1). Electrophoresis was performed on a 5-20% SDS-PAGE gel at 70V (Stacking gel) / 90V (Resolving gel) for 2-3 hours. The sample well of each lane was loaded with 30 ug of sample under reducing conditions. Lane 1: human placenta tissue lysates, Lane 2: rat liver tissue lysates, Lane 3: mouse liver tissue lysates, Lane 4: mouse spleen tissue lysates. The membrane was probed with rabbit anti-PLG antigen affinity purified polyclonal antibody (Catalog # A00702-1) at 0.5 ug/mL overnight at 4°C, then washed with TBS-0.1%Tween 3 times with 5 minutes each and probed with a goat anti-rabbit IgG-HRP secondary antibody at a dilution of 1:5000 for 1.5 hour at RT. The signal is developed using an Enhanced Chemiluminescent detection (ECL) kit (Catalog # EK1002) with Tanon 5200 system. A specific band was detected for PLG at approximately 90-100 kDa. The expected band size for PLG is at 90-100 kDa.

## 1 Publications Citing This Product

1. PubMed ID: 28552473, Dysfunctional fibrinolysis and cerebral venous thrombosis

Visit [bosterbio.com/anti-plasminogen-plg-picoband-trade-antibody-a00702-1-boster.html](http://bosterbio.com/anti-plasminogen-plg-picoband-trade-antibody-a00702-1-boster.html) to see all 1 publications.

## Submit a product review to Biocompare.com

Submit a review of this product to Biocompare.com to receive a \$20 Amazon.com giftcard! Your reviews help your fellow scientists make the right decisions. Thank you for your contribution.



Anti-Plasminogen/PLG Antibody

For Research Use Only. Not for use in diagnostic procedures.