

Anti-C-C motif chemokine 4 CCL4 Antibody

Catalog Number: A00703

About CCL4

CCL4, also known as macrophage inflammatory protein 1-beta (MIP1B), belongs to the intercrine beta (chemokine CC) family. Both CCL4 and the related protein CCL3 participate in the host response to invading bacterial, viral, parasite and fungal pathogens by regulating the trafficking and activation state of selected subgroups of inflammatory cells. While both CCL4 and CCL3 exert similar effects on monocytes, their effect on lymphocytes differ; with CCL4 selectively attracting CD4+ lymphocytes and CCL3 selectively attracting CD8+ lymphocytes. Additionally, both have been shown to be potent chemoattractants for B cells, eosinophils and dendritic cells. The processed form of CCL4 can induce down-modulation of surface expression of the chemokine receptor CCR5, thus inhibiting the CCR5-mediated entry of HIV-1 in T cells.

Overview

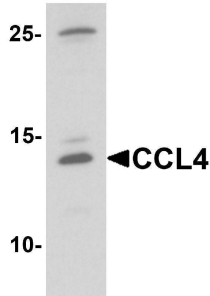
Product Name	Anti-C-C motif chemokine 4 CCL4 Antibody
Reactive Species	Human, Mouse, Rat
Description	Boster Bio Anti-C-C motif chemokine 4 CCL4 Antibody (Catalog # A00703). Tested in ELISA, WB, IHC-P, IF applications. This antibody reacts with Human, Mouse, Rat.
Application	ELISA, IF, IHC-P, WB
Clonality	Polyclonal
Formulation	CCL4 Antibody is supplied in PBS containing 0.02% sodium azide.
Storage Instructions	CCL4 antibody can be stored at 4°C for three months and -20°C, stable for up to one year.
Host	Rabbit
Uniprot ID	P13236

Technical Details

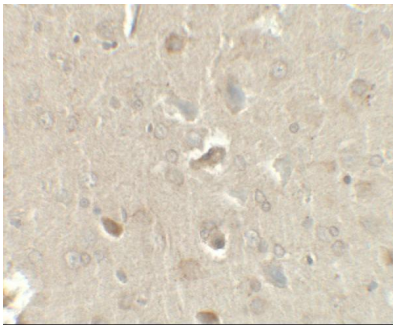
Immunogen	Rabbit polyclonal CCL4 antibody was raised against a 15 amino acid peptide near the center of human CCL4. The immunogen is located within the first 50 amino acids of CCL4.
Predicted Reactive Species	Bovine, Pig, Rabbit
Isotype	IgG
Form	Liquid
Concentration	1 mg/mL
Purification	CCL4 Antibody is affinity chromatography purified via peptide column.
Suggested Dilutions	CCL4 antibody can be used for detection of CCL4 by Western blot at 1 - 2 ug/mL.

Antibody validated: Western Blot in rat samples; Immunohistochemistry in rat samples and Immunofluorescence in rat samples. All other applications and species not yet tested. Optimal dilutions for each application should be determined by the researcher.

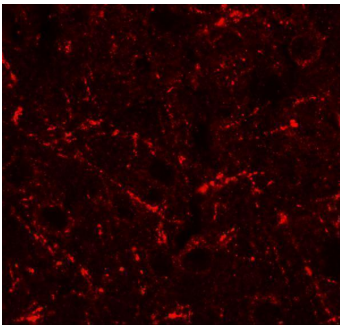
Anti-C-C motif chemokine 4 CCL4 Antibody (A00703) Images



Western blot analysis of CCL4 in rat brain tissue lysate with CCL4 antibody at 1 ug/mL.



Immunohistochemistry of CCL4 in rat brain tissue with CCL4 antibody at 2.5 ug/ml.



Immunofluorescence of CCL4 in rat brain tissue with CCL4 antibody at 20 ug/ml.

Submit a product review to [Biocompare.com](https://www.biocompare.com)

Submit a review of this product to [Biocompare.com](https://www.biocompare.com) to receive a \$20 Amazon.com giftcard! Your reviews help your fellow scientists make the right decisions. Thank you for your contribution.



Anti-C-C motif chemokine 4 CCL4 Antibody

For Research Use Only. Not for use in diagnostic procedures.