

Anti-SSB (phospho-S366) Antibody

Catalog Number: A00705S366

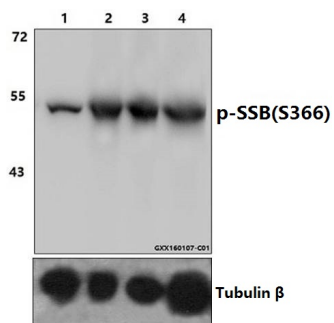
Overview

Product Name	Anti-SSB (phospho-S366) Antibody
Reactive Species	Human
Description	Boster Bio Anti-SSB (phospho-S366) Antibody catalog # A00705S366. Tested in WB applications. This antibody reacts with Human.
Application	WB
Clonality	Polyclonal
Formulation	Rabbit IgG, 1mg/ml in PBS with 0.02% sodium azide, 50% glycerol, pH7.2
Storage Instructions	Store at -20°C for one year. For short term storage and frequent use, store at 4°C for up to one month. Avoid repeated freeze-thaw cycles.
Host	Rabbit
Uniprot ID	P05455

Technical Details

Immunogen	Synthetic phosphopeptide derived from human SSB around the phosphorylation site of Serine 366.
Cross Reactivity	No cross reactivity with other proteins.
Isotype	IgG
Form	Liquid
Concentration	1 mg/ml
Purification	The antibody was affinity-purified from rabbit antiserum by affinity-chromatography using epitope-specific immunogen and the purity is > 110% (by SDS-PAGE).
Suggested Dilutions	WB: 1:1000-1:2000

Anti-SSB (phospho-S366) Antibody (A00705S366) Images



Western blot (WB) analysis of p-SSB (S366) polyclonal antibody at 1:1000 dilution Lane1:HEK293T whole cell lysate Lane2:HEK293T treated with EGF(0.1ng/ml,15min) whole cell lysate Lane3:HEK293T treated with EGF(0.1ng/ml,30min) whole cell lysate Lane4:HEK293T treated with EGF(0.1ng/ml,60min) whole cell lysate

Submit a product review to Biocompare.com

Submit a review of this product to Biocompare.com to receive a \$20 Amazon.com giftcard! Your reviews help your fellow scientists make the right decisions. Thank you for your contribution.



Anti-SSB (phospho-S366) Antibody

For Research Use Only. Not for use in diagnostic procedures.