

Anti-SSB (T362) Antibody

Catalog Number: A00705T362

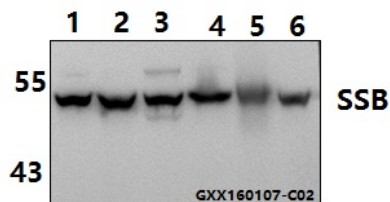
Overview

Product Name	Anti-SSB (T362) Antibody
Reactive Species	Human, Mouse, Rat
Description	Boster Bio Anti-SSB (T362) Antibody catalog # A00705T362. Tested in WB applications. This antibody reacts with Human,Mouse,Rat.
Application	WB
Clonality	Polyclonal
Formulation	Rabbit IgG, 1mg/ml in PBS with 0.02% sodium azide, 50% glycerol, pH7.2
Storage Instructions	Store at -20°C for one year. For short term storage and frequent use, store at 4°C for up to one month. Avoid repeated freeze-thaw cycles.
Host	Rabbit
Uniprot ID	P05455

Technical Details

Immunogen	Synthetic peptide, corresponding to amino acids 331-380 of Human SSB.
Cross Reactivity	No cross reactivity with other proteins.
Isotype	IgG
Form	Liquid
Concentration	1 mg/ml
Purification	The antibody was affinity-purified from rabbit antiserum by affinity-chromatography using epitope-specific immunogen and the purity is > 110% (by SDS-PAGE).
Suggested Dilutions	WB: 1:1000-1:2000

Anti-SSB (T362) Antibody (A00705T362) Images



Western blot (WB) analysis of SSB (T362) polyclonal antibody at 1:1000 dilution Lane1:HEK293T whole cell lysate(40ug) Lane2:L02 whole cell lysate(40ug) Lane3:SK-OVCAR3 whole cell lysate(40ug) Lane4:MCF-7 whole cell lysate(40ug) Lane5:HepG2 whole cell lysate(40ug) Lane6:A549 whole cell lysate(40ug)

Submit a product review to Biocompare.com

Submit a review of this product to Biocompare.com to receive a \$20 Amazon.com giftcard! Your reviews help your fellow scientists make the right decisions. Thank you for your contribution.



Anti-SSB (T362) Antibody

For Research Use Only. Not for use in diagnostic procedures.