

## Anti-RNF8 Antibody

Catalog Number: A00707

### About RNF8

RNF8 was identified as a ubiquitin ligase (E3) containing a RING finger motif and a FHA domain. This protein has been shown to interact with several class II ubiquitin-conjugating enzymes including UBE2E1/UBCH6, UBE2E2, and UBE2E3. RNF8 assembles at DNA double-strand breaks (DSBs) via interactions through the FHA domain with the adaptor protein MDC1, resulting in an increase in DSB-associated H2A histone ubiquitinations mediated by the associated ubiquitin ligase RNF168 followed by the accumulation of 53BP1 and BRCA1 repair proteins. Together with RNF168, RNF8 plays an integral part of class switch recombination in B cells, allowing the production of several classes of antibodies, through the recruitment of 53BP1 and BRCA1 to the DSB sites.

### Overview

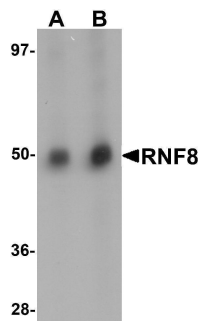
Product Name	Anti-RNF8 Antibody
Reactive Species	Human, Mouse, Rat
Description	Boster Bio Anti-RNF8 Antibody (Catalog # A00707). Tested in ELISA, WB, IF applications. This antibody reacts with Human, Mouse, Rat.
Application	ELISA, IF, WB
Clonality	Polyclonal
Formulation	RNF8 Antibody is supplied in PBS containing 0.02% sodium azide.
Storage Instructions	RNF8 antibody can be stored at 4°C for three months and -20°C, stable for up to one year. Avoid repeated freeze-thaw cycles. Antibodies should not be exposed to prolonged high temperatures.
Host	Rabbit
Uniprot ID	O76064

### Technical Details

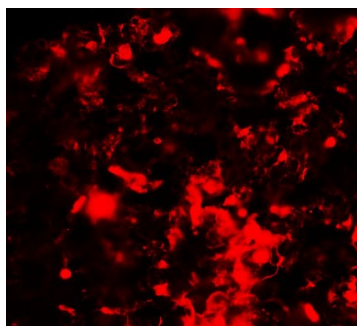
Immunogen	RNF8 antibody was raised against a 14 amino acid synthetic peptide near the carboxy terminus of human RNF8. The immunogen is located within amino acids 330 - 380 of RNF8.
Predicted Reactive Species	Bovine
Cross Reactivity	At least three isoforms of RNF8 are known to exist; this antibody will detect all three isoforms.
Isotype	IgG
Form	Liquid
Concentration	1 mg/mL

Purification	RNF8 Antibody is affinity chromatography purified via peptide column.
Suggested Dilutions	RNF8 antibody can be used for detection of RNF8 by Western blot at 1 - 2 ug/mL. Antibody can also be used for immunofluorescence starting at 20 ug/mL. For immunofluorescence start at 20 ug/mL. Antibody validated: Western Blot in human samples and Immunofluorescence in rat samples. All other applications and species not yet tested. Optimal dilutions for each application should be determined by the researcher.

## Anti-RNF8 Antibody (A00707) Images



Western blot analysis of RNF8 in human lung tissue lysate with RNF8 antibody at (A) 1 and (B) 2 ug/mL.



Immunofluorescence of RNF8 in rat lung tissue with RNF8 antibody at 20 ug/mL.

### Submit a product review to [Biocompare.com](https://www.biocompare.com)

Submit a review of this product to [Biocompare.com](https://www.biocompare.com) to receive a \$20 Amazon.com giftcard! Your reviews help your fellow scientists make the right decisions. Thank you for your contribution.



### Anti-RNF8 Antibody

For Research Use Only. Not for use in diagnostic procedures.