

Anti-MCC Antibody Picoband®

Catalog Number: A00711-1

About MCC

MUTATED IN COLORECTAL CANCERS(MCC) is a tumor suppressor gene. It is mapped to 5q22.2. This gene suppresses cell proliferation and the Wnt/b-catenin pathway in colorectal cancer cells. MCC also Inhibits DNA binding of b-catenin/TCF/LEF transcription factors, and it is Involved in cell migration independently of RAC1, CDC42 and p21-activated kinase(PAK) activation. What's more, MCC can interact with SCRIB(via phosphorylated PDZ-binding motif), EZR, SNX27, SLC9A3R1 and SLC9A3R2.

Overview

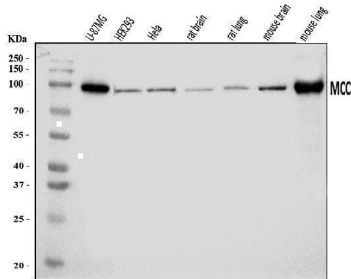
Product Name	Anti-MCC Antibody Picoband®
Reactive Species	Human, Mouse, Rat
Description	Boster Bio Anti-MCC Antibody Picoband® catalog # A00711-1. Tested in ELISA, Flow Cytometry, WB applications. This antibody reacts with Human, Mouse, Rat. The brand Picoband indicates this is a premium antibody that guarantees superior quality, high affinity, and strong signals with minimal background in Western blot applications. Only our best-performing antibodies are designated as Picoband, ensuring unmatched performance.
Application	ELISA, Flow Cytometry, WB
Clonality	Polyclonal
Formulation	Each vial contains 4 mg Trehalose, 0.9 mg NaCl, 0.2 mg Na ₂ HPO ₄ .
Storage Instructions	At -20°C for one year from date of receipt. After reconstitution, at 4°C for one month. It can also be aliquotted and stored frozen at -20°C for six months. Avoid repeated freezing and thawing.
Host	Rabbit
Uniprot ID	P23508

Technical Details

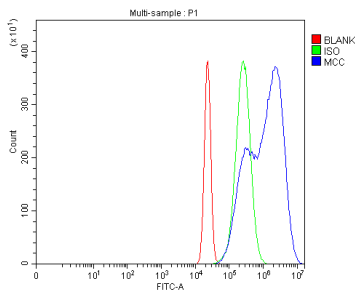
Immunogen	E.coli-derived human MCC recombinant protein (Position: M1-E234).
Recommended Detection Systems	Boster recommends Enhanced Chemiluminescent Kit with anti-Rabbit IgG (EK1002) for Western blot.
Cross Reactivity	No cross-reactivity with other proteins.
Isotype	Rabbit IgG
Form	Lyophilized
Concentration	Adding 0.2 ml of distilled water will yield a concentration of 500 ug/ml.

Purification	Immunogen affinity purified.
Suggested Dilutions	Western blot, 0.25-0.5 ug/ml, Human, Mouse, Rat Flow Cytometry (Fixed), 1-3 ug/1x10 ⁶ cells, Human ELISA, 0.1-0.5 ug/ml, -

Anti-MCC Antibody Picoband® (A00711-1) Images



Western blot analysis of MCC using anti-MCC antibody (A00711-1). Electrophoresis was performed on a 5-20% SDS-PAGE gel at 70V (Stacking gel) / 90V (Resolving gel) for 2-3 hours. The sample well of each lane was loaded with 30 ug of sample under reducing conditions. Lane 1: human U-87MG whole cell lysates, Lane 2: human HEK293 whole cell lysates, Lane 3: human Hela whole cell lysates, Lane 4: rat brain tissue lysates, Lane 5: rat lung tissue lysates, Lane 6: mouse brain tissue lysates, Lane 7: mouse lung tissue lysates. After electrophoresis, proteins were transferred to a nitrocellulose membrane at 150 mA for 50-90 minutes. Blocked the membrane with 5% non-fat milk/TBS for 1.5 hour at RT. The membrane was incubated with rabbit anti-MCC antigen affinity purified polyclonal antibody (Catalog # A00711-1) at 0.5 ug/mL overnight at 4°C, then washed with TBS-0.1%Tween 3 times with 5 minutes each and probed with a goat anti-rabbit IgG-HRP secondary antibody at a dilution of 1:5000 for 1.5 hour at RT. The signal is developed using an Enhanced Chemiluminescent detection (ECL) kit (Catalog # EK1002) with Tanon 5200 system. A specific band was detected for MCC at approximately 98 kDa. The expected band size for MCC is at 91 kDa.



Flow Cytometry analysis of Hela cells using anti-MCC antibody (A00711-1). Overlay histogram showing Hela cells stained with A00711-1 (Blue line). To facilitate intracellular staining, cells were fixed with 4% paraformaldehyde and permeabilized with permeabilization buffer. The cells were blocked with 10% normal goat serum. And then incubated with rabbit anti-MCC Antibody (A00711-1, 1 ug/1x10⁶ cells) for 30 min at 20°C. DyLight®488 conjugated goat anti-rabbit IgG (BA1127, 5-10 ug/1x10⁶ cells) was used as secondary antibody for 30 minutes at 20°C. Isotype control antibody (Green line) was rabbit IgG (1 ug/1x10⁶) used under the same conditions. Unlabelled sample without incubation with primary antibody and secondary antibody (Red line) was used as a blank control.

Submit a product review to [Biocompare.com](https://www.biocompare.com)

Submit a review of this product to [Biocompare.com](https://www.biocompare.com) to receive a \$20 Amazon.com giftcard! Your reviews help your fellow scientists make the right decisions. Thank you for your contribution.



Anti-MCC Antibody

For Research Use Only. Not for use in diagnostic procedures.