

Anti-Mcl-1 Antibody

Catalog Number: A00712

About MCL1

Myeloid cell leukemia-1 (Mcl-1) is a member of the Bcl-2 family of proteins that can act to promote cell survival. While the mechanism by which Mcl-1 inhibits apoptosis is not known, it is thought that it may heterodimerize and neutralize pro-apoptotic members of the Bcl-2 family such as Bim or Bak. Mcl-1 was originally identified in differentiating myeloid cells, but has since been shown to be expressed in multiple cell types. Mcl-1 is essential for embryogenesis and for the development and maintenance of B and T lymphocytes in animals. Mcl-1 exists as at least three distinct isoforms designated Mcl-1L, Mcl-1S and Mcl-1ES. In marked contrast to the larger isoform of Mcl-1, overexpression of Mcl-1S promotes cell death.

Overview

Product Name	Anti-Mcl-1 Antibody
Reactive Species	Human, Mouse, Rat
Description	Boster Bio Anti-Mcl-1 Antibody (Catalog # A00712). Tested in ELISA, WB, ICC, IF applications. This antibody reacts with Human, Mouse, Rat.
Application	ELISA, IF, ICC, WB
Clonality	Polyclonal
Formulation	Mcl-1 Antibody is supplied in PBS containing 0.02% sodium azide.
Storage Instructions	Mcl-1 antibody can be stored at 4°C for three months and -20°C, stable for up to one year. Avoid repeated freeze-thaw cycles. Antibodies should not be exposed to prolonged high temperatures.
Host	Rabbit
Uniprot ID	Q07820

Technical Details

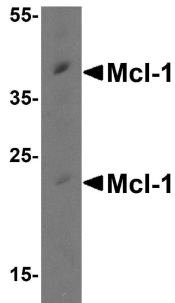
Immunogen	Mcl-1 antibody was raised against a peptide corresponding to 16 amino acids near the carboxy terminus of human Mcl-1. The immunogen is located within amino acids 220 - 270 of Mcl-1.
Predicted Reactive Species	Bovine
Cross Reactivity	This Mcl-1 antibody detects isoforms Mcl-1L and Mcl-1ES.
Isotype	IgG
Form	Liquid
Concentration	1 mg/mL
Purification	Mcl-1 Antibody is affinity chromatography purified via peptide column.

Suggested Dilutions

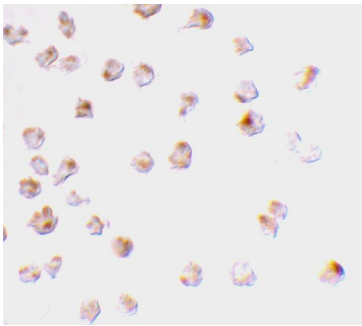
Mcl-1 antibody can be used for detection of isoforms Mcl-1L and Mcl-1ES by Western blot at 1 to 2 ug/mL. Antibody can also be used for immunocytochemistry starting at 2 ug/mL. For immunofluorescence start at 10 ug/mL.

Antibody validated: Western Blot in human samples; Immunocytochemistry in human samples and Immunofluorescence in human samples. All other applications and species not yet tested. Optimal dilutions for each application should be determined by the researcher.

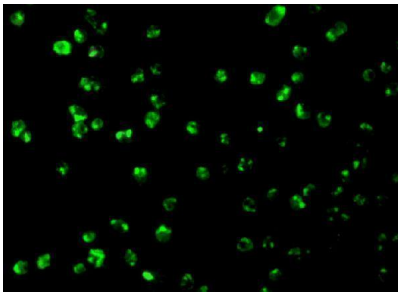
Anti-Mcl-1 Antibody (A00712) Images



Western blot analysis of Mcl-1 in Raji cell lysate with Mcl-1 antibody at 0.5 ug/mL.



Immunocytochemistry staining of Raji cells using Mcl-1 antibody at 2 ug/mL.



Immunofluorescence of Mcl-1 in Raji cells with Mcl-1 antibody at 10 ug/mL.

Submit a product review to [Biocompare.com](https://www.biocompare.com)

Submit a review of this product to [Biocompare.com](https://www.biocompare.com) to receive a \$20 Amazon.com giftcard! Your reviews help your fellow scientists make the right decisions. Thank you for your contribution.



Anti-Mcl-1 Antibody

For Research Use Only. Not for use in diagnostic procedures.