

## Anti-MCL1 Antibody (BH3 Domain Specific)

Catalog Number: A00712-1

### About MCL1

The Mcl-1 protein belongs to the Bcl-2 family. Alternative splicing occurs at this locus and two transcript variants encoding distinct isoforms have been identified. The longer gene product (isoform 1) enhances cell survival by inhibiting apoptosis while the alternatively spliced shorter gene product (isoform 2) promotes apoptosis and is death-inducing.

### Overview

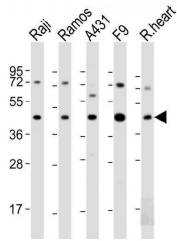
Product Name	Anti-MCL1 Antibody (BH3 Domain Specific)
Reactive Species	Human, Mouse, Rat
Description	Boster Bio Anti-MCL1 Antibody (BH3 Domain Specific) (Catalog # A00712-1). Tested in IHC-P, WB, Flow Cytometry application(s). This antibody reacts with Human, Mouse, Rat.
Application	Flow Cytometry, IHC-P, WB
Clonality	Polyclonal
Formulation	Purified polyclonal antibody supplied in PBS with 0.09% (W/V) sodium azide.
Storage Instructions	Maintain refrigerated at 2-8°C for up to 2 weeks. For long-term storage, store at -20°C in small aliquots to prevent freeze-thaw cycles.
Host	Rabbit
Uniprot ID	Q07820

### Technical Details

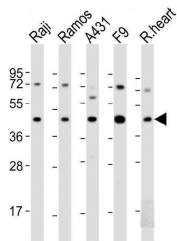
Immunogen	This MCL1 antibody is generated from rabbits immunized with a KLH conjugated synthetic peptide between 191-226 amino acids from human MCL1.
Predicted Reactive Species	Bovine, Pig
Recommended Detection Systems	Boster recommends Enhanced Chemiluminescent Kit with anti-Rabbit IgG (EK1002) for Western blot, and HRP Conjugated anti-Rabbit IgG Super Vision Assay Kit (SV0002-1) for IHC(P).
Cross Reactivity	No cross reactivity with other proteins.
Isotype	Rabbit IgG
Form	Liquid
Purification	This antibody is purified through a protein A column, followed by peptide affinity purification.
Suggested Dilutions	WB: 1:2000

IHC-P: 1:10-1:50  
FC: 1:25

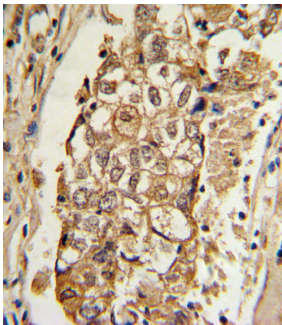
## Anti-MCL1 Antibody (BH3 Domain Specific) (A00712-1) Images



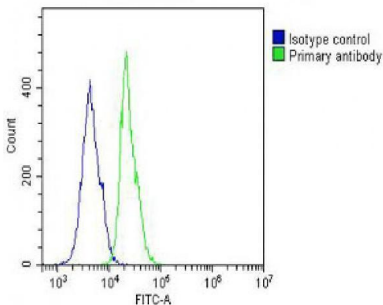
All lanes : Anti-MCL1 Antibody (BH3 Domain Specific) at 1:2000 dilution  
Lane 1: Raji whole cell lysate  
Lane 2: Ramos whole cell lysate  
Lane 3: A431 whole cell lysate  
Lane 4: F9 whole cell lysate  
Lane 5: A20 whole cell lysate  
Lysates/proteins at 20 µg per lane. Secondary Goat Anti-Rabbit IgG, (H+L), Peroxidase conjugated at 1/10000 dilution. Predicted band size : 37 kDa  
Blocking/Dilution buffer: 5% NFD/MTBST.



All lanes : Anti-MCL1 Antibody (BH3 Domain Specific) at 1:2000 dilution  
Lane 1: Raji whole cell lysate  
Lane 2: Ramos whole cell lysate  
Lane 3: A431 whole cell lysate  
Lane 4: F9 whole cell lysate  
Lane 5: rat heart lysate  
Lysates/proteins at 20 µg per lane. Secondary Goat Anti-Rabbit IgG, (H+L), Peroxidase conjugated at 1/10000 dilution. Predicted band size : 37 kDa  
Blocking/Dilution buffer: 5% NFD/MTBST.



Formalin-fixed and paraffin-embedded human breast carcinoma with MCL1 Antibody (BH3 Domain Specific), which was peroxidase-conjugated to the secondary antibody, followed by DAB staining. This data demonstrates the use of this antibody for immunohistochemistry; clinical relevance has not been evaluated.



Overlay histogram showing A431 cells stained with A00712-1 (green line). The cells were fixed with 2% paraformaldehyde (10 min) and then permeabilized with 90% methanol for 10 min. The cells were then incubated in 2% bovine serum albumin to block non-specific protein-protein interactions followed by the antibody (A00712-1, 1:25 dilution) for 60 min at 37°C. The secondary antibody used was Goat-Anti-Rabbit IgG, DyLight® 488 Conjugated Highly Cross-Adsorbed at 1/200 dilution for 40 min at 37°C. Isotype control antibody (blue line) was rabbit IgG (1g/1x10<sup>6</sup> cells) used under the same conditions. Acquisition of >10, 000 events was performed.

Submit a product review to [Biocompare.com](https://www.biocompare.com)

Submit a review of this product to [Biocompare.com](https://www.biocompare.com) to receive a \$20 Amazon.com giftcard! Your reviews help your fellow scientists make the right decisions. Thank you for your contribution.



Anti-MCL1 Antibody (BH3 Domain Specific)

For Research Use Only. Not for use in diagnostic procedures.