

## Anti-Emerin EMD Antibody

Catalog Number: A00714-1

### About EMD

Emerin is a serine-rich nuclear membrane protein and a member of the nuclear lamina-associated protein family that includes proteins such as LAP2 and MAN1. Each family member, including Emerin, has an ~40 amino acid LEM-domains that binds barrier-to-autointegration (BANF1), a conserved chromatin protein that also serves as a host cell component of retroviral integration complexes, including that of HIV. Emerin is anchored at the inner membrane of the nuclear envelope where it binds to nuclear intermediate filaments that are formed by lamin proteins. Drefuss-Emermy muscular dystrophy is an X-linked inherited degenerative myopathy resulting from mutation in the emerin gene.

### Overview

Product Name	Anti-Emerin EMD Antibody
Reactive Species	Human, Mouse, Rat
Description	Boster Bio Anti-Emerin EMD Antibody (Catalog # A00714-1). Tested in ELISA, WB, IHC-P, IF applications. This antibody reacts with Human, Mouse, Rat.
Application	ELISA, IF, IHC-P, WB
Clonality	Polyclonal
Formulation	Emerin Antibody is supplied in PBS containing 0.02% sodium azide.
Storage Instructions	Emerin antibody can be stored at 4°C for three months and -20°C, stable for up to one year. Avoid repeated freeze-thaw cycles. Antibodies should not be exposed to prolonged high temperatures.
Host	Rabbit
Uniprot ID	P50402

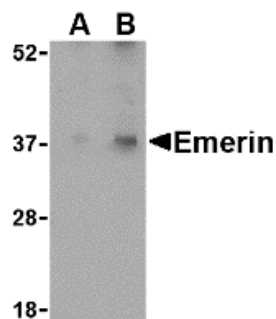
### Technical Details

Immunogen	Emerin antibody was raised against a 19 amino acid synthetic peptide from near the amino terminus of human Emerin. The immunogen is located within the first 50 amino acids of Emerin.
Predicted Reactive Species	Bovine
Isotype	IgG
Form	Liquid
Concentration	1 mg/mL
Purification	Emerin Antibody is affinity chromatography purified via peptide column.
Suggested Dilutions	Emerin antibody can be used for detection of Emerin by Western blot at 0.5 - 1 ug/mL. Antibody can also be used for immunohistochemistry starting at 2.5 ug/mL. For immunofluorescence start at 10

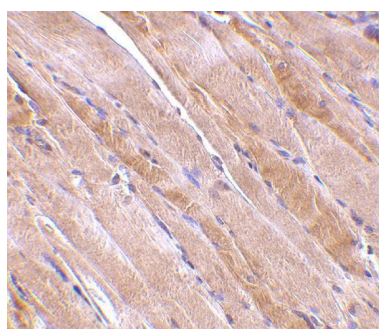
ug/mL.

Antibody validated: Western Blot in human samples; Immunohistochemistry in human samples and Immunofluorescence in human samples. All other applications and species not yet tested. Optimal dilutions for each application should be determined by the researcher.

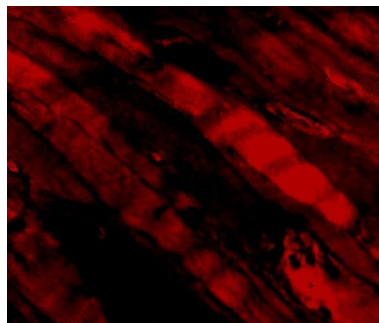
## Anti-Emerin EMD Antibody (A00714-1) Images



Western blot analysis of Emerin in human skeletal muscle tissue lysate with Emerin antibody at (A) 0.5 and (B) 1 ug/mL.



Immunohistochemistry of emerin in human skeletal muscle tissue with emerin antibody at 2.5 ug/mL.



Immunofluorescence of Emerin in Human Skeletal Muscle cells with Emerin antibody at 5 ug/mL.

### Submit a product review to [Biocompare.com](https://www.biocompare.com)

Submit a review of this product to [Biocompare.com](https://www.biocompare.com) to receive a \$20 Amazon.com giftcard! Your reviews help your fellow scientists make the right decisions. Thank you for your contribution.



Anti-Emerin EMD Antibody

For Research Use Only. Not for use in diagnostic procedures.