

## Anti-Laforin EPM2A Antibody

Catalog Number: A00715

### About EPM2A

The Epilepsy, progressive myoclonus type 2A protein (EPM2A) is a dual-specificity phosphatase that associates with polyribosomes. Mutations in this gene have been associated with myoclonic epilepsy of Lafora. EPM2A interacts with a number of proteins known to be involved in glycogen metabolism and has been shown to have robust phosphatase activity against a phosphorylated complex carbohydrate, suggesting that EPM2A may be involved in the regulation of glycogen metabolism.

### Overview

Product Name	Anti-Laforin EPM2A Antibody
Reactive Species	Human, Mouse, Rat
Description	Boster Bio Anti-Laforin EPM2A Antibody (Catalog # A00715). Tested in ELISA, WB, ICC, IF applications. This antibody reacts with Human, Mouse, Rat.
Application	ELISA, IF, ICC, WB
Clonality	Polyclonal
Formulation	EPM2A Antibody is supplied in PBS containing 0.02% sodium azide.
Storage Instructions	EPM2A antibody can be stored at 4°C for three months and -20°C, stable for up to one year. Avoid repeated freeze-thaw cycles. Antibodies should not be exposed to prolonged high temperatures.
Host	Rabbit
Uniprot ID	O95278

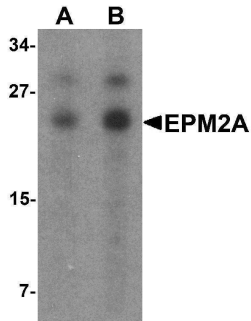
### Technical Details

Immunogen	EPM2A antibody was raised against a 17 amino acid synthetic peptide near the carboxy terminus of human EPM2A. The immunogen is located within amino acids 190 - 240 of EPM2A.
Predicted Reactive Species	Bovine
Cross Reactivity	At least four isoforms of EPM2A are known to exist; this antibody will detect all but the shortest isoform.
Isotype	IgG
Form	Liquid
Concentration	1 mg/mL
Purification	EPM2A Antibody is affinity chromatography purified via peptide column.

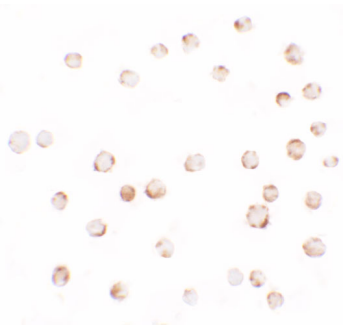
Suggested Dilutions

EPM2A antibody can be used for detection of EPM2A by Western blot at 1 - 2 ug/mL.  
Antibody validated: Western Blot in human samples; Immunocytochemistry in human samples and Immunofluorescence in human samples. All other applications and species not yet tested. Optimal dilutions for each application should be determined by the researcher.

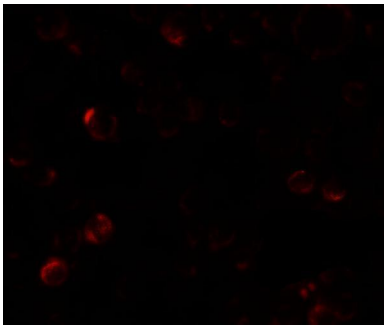
## Anti-Laforin EPM2A Antibody (A00715) Images



Western blot analysis of SW480 in SW480 cell lysate with EPM2A antibody at (A) 1 and (B) 2 ug/mL.



Immunocytochemistry of EPM2A in SW480 cells with EPM2A antibody at 2.5 ug/ml.



Immunofluorescence of EPM2A in SW480 cells with EPM2A antibody at 5 ug/ml.

### Submit a product review to [Biocompare.com](https://www.biocompare.com)

Submit a review of this product to [Biocompare.com](https://www.biocompare.com) to receive a \$20 Amazon.com giftcard! Your reviews help your fellow scientists make the right decisions. Thank you for your contribution.



Anti-Laforin EPM2A Antibody

For Research Use Only. Not for use in diagnostic procedures.