

Anti-OTC Antibody (Center)

Catalog Number: A00721-2

About OTC

OTC is a mitochondrial matrix enzyme. Missense, nonsense, and frameshift mutations in this enzyme lead to ornithine transcarbamylase deficiency, which causes hyperammonemia.

Overview

Product Name	Anti-OTC Antibody (Center)
Reactive Species	Human, Mouse, Rat
Description	Boster Bio Anti-OTC Antibody (Center) (Catalog # A00721-2). Tested in IHC-P, Flow Cytometry, WB application(s). This antibody reacts with Human, Mouse, Rat.
Application	Flow Cytometry, IHC-P, WB
Clonality	Polyclonal
Formulation	Purified polyclonal antibody supplied in PBS with 0.09% (W/V) sodium azide.
Storage Instructions	Maintain refrigerated at 2-8°C for up to 2 weeks. For long-term storage, store at -20°C in small aliquots to prevent freeze-thaw cycles.
Host	Rabbit
Uniprot ID	P00480

Technical Details

Immunogen	This OTC antibody is generated from rabbits immunized with a KLH conjugated synthetic peptide between 71-98 amino acids of human OTC.
Predicted Reactive Species	Bovine, Pig, Sheep
Recommended Detection Systems	Boster recommends Enhanced Chemiluminescent Kit with anti-Rabbit IgG (EK1002) for Western blot, and HRP Conjugated anti-Rabbit IgG Super Vision Assay Kit (SV0002-1) for IHC(P).
Cross Reactivity	No cross reactivity with other proteins.
Isotype	Rabbit IgG
Form	Liquid
Purification	This antibody is purified through a protein A column, followed by peptide affinity purification.
Suggested Dilutions	Dilute the sample so that the expected range of concentrations fall within the detection range of this kit.

If the expected range of concentration is unknown, a pilot test should be conducted to decide the optimal dilution ratio for your samples.

Some PubMed article(s) citing the expression level of this target are as follows:

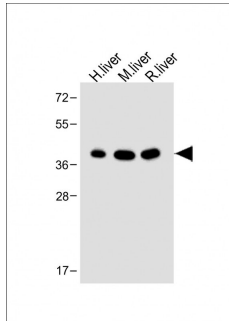
Boster Bio's internal QC testing used:

WB: 1:2000

IHC-P: 1:10-1:50

FC: 1:10-1:50

Anti-OTC Antibody (Center) (A00721-2) Images



All lanes : Anti-OTC Antibody (Center) at 1:2000 dilution

Lane 1: Human liver lysate

Lane 2: Mouse liver lysate

Lane 3: Rat liver lysate

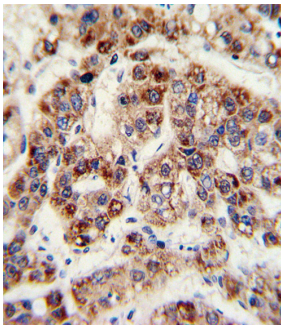
Lysates/proteins at 20 µg per lane.

Secondary

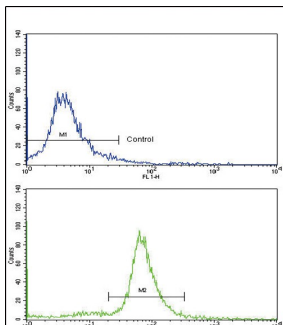
Goat Anti-Rabbit IgG, (H+L), Peroxidase conjugated at 1/10000 dilution.

Predicted band size : 40 kDa

Blocking/Dilution buffer: 5% NFDM/TBST.



Formalin-fixed and paraffin-embedded human hepatocarcinoma with OTC Antibody (Center), which was peroxidase-conjugated to the secondary antibody, followed by DAB staining. This data demonstrates the use of this antibody for immunohistochemistry; clinical relevance has not been evaluated.



Flow cytometric analysis of ATDC5 cells using OTC Antibody (Center)(bottom histogram) compared to a negative control (top histogram). FITC-conjugated goat-anti-rabbit secondary antibodies were used for the analysis.

Submit a product review to Biocompare.com

Submit a review of this product to Biocompare.com to receive a \$20 Amazon.com giftcard! Your reviews help your fellow scientists make the right decisions. Thank you for your contribution.



Anti-OTC Antibody (Center)