

Anti-ROCK1 Antibody

Catalog Number: A00722

About ROCK1

ROCK1 is a member of the AGC serine/threonine protein kinase family that regulates the assembly of the actin cytoskeleton. ROCK1 contains a protein kinase domain, a coiled-coil region and a zinc finger region and appears to be present as a dimer. ROCK1, like its isozyme ROCK2, is a downstream target of the small G-protein Rho and plays a role in smooth muscle contraction, malignant cell transformation, tumor invasion and metastasis, and mediates the cellular morphological changes during apoptosis.

Overview

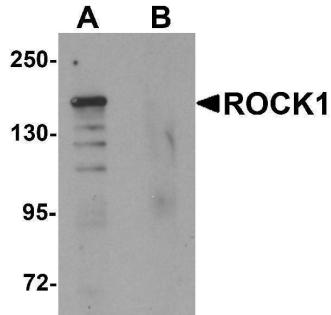
Product Name	Anti-ROCK1 Antibody
Reactive Species	Human, Mouse, Rat
Description	Boster Bio Anti-ROCK1 Antibody (Catalog # A00722). Tested in ELISA, WB, ICC, IF applications. This antibody reacts with Human, Mouse, Rat.
Application	ELISA, IF, ICC, WB
Clonality	Polyclonal
Formulation	ROCK1 Antibody is supplied in PBS containing 0.02% sodium azide.
Storage Instructions	ROCK1 antibody can be stored at 4°C for three months and -20°C, stable for up to one year. Avoid repeated freeze-thaw cycles. Antibodies should not be exposed to prolonged high temperatures.
Host	Rabbit
Uniprot ID	Q13464

Technical Details

Immunogen	ROCK1 antibody was raised against a 15 amino acid synthetic peptide near the amino terminus of human ROCK1. The immunogen is located within the first 50 amino acids of ROCK1.
Predicted Reactive Species	Rabbit
Cross Reactivity	ROCK1 antibody is predicted to not cross-react with other ROCK protein family members.
Isotype	IgG
Form	Liquid
Concentration	1 mg/mL
Purification	ROCK1 Antibody is affinity chromatography purified via peptide column.
Suggested Dilutions	ROCK1 antibody can be used for detection of ROCK1 by Western blot at 1 ug/mL. Antibody can also

be used for immunocytochemistry starting at 10 ug/mL. For immunofluorescence start at 20 ug/mL. Antibody validated: Western Blot in human samples; Immunocytochemistry in human samples and Immunofluorescence in human samples. All other applications and species not yet tested. Optimal dilutions for each application should be determined by the researcher.

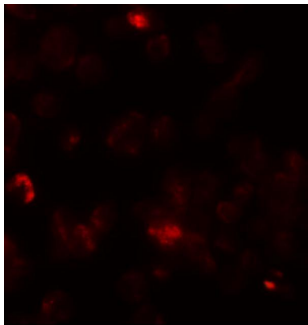
Anti-ROCK1 Antibody (A00722) Images



Western blot analysis of ROCK1 in 293 cell lysate with ROCK1 antibody at 1 ug/mL in (A) the absence and (B) the presence of blocking peptide.



Immunocytochemistry of ROCK1 in 293 cells with ROCK1 antibody at 10 ug/mL.



Immunofluorescence of ROCK1 in 293 cells with ROCK1 antibody at 20 ug/mL.

Submit a product review to [Biocompare.com](https://www.biocompare.com)

Submit a review of this product to [Biocompare.com](https://www.biocompare.com) to receive a \$20 Amazon.com giftcard! Your reviews help your fellow scientists make the right decisions. Thank you for your contribution.



Anti-ROCK1 Antibody

For Research Use Only. Not for use in diagnostic procedures.