

Anti-KLF5 Antibody (C-term)

Catalog Number: A00727

About KLF5

KLF5 is a member of the Kruppel-like factor subfamily of zinc finger proteins. Since the protein localizes to the nucleus and binds the epidermal growth factor response element, the protein is thought to be a transcription factor.

Overview

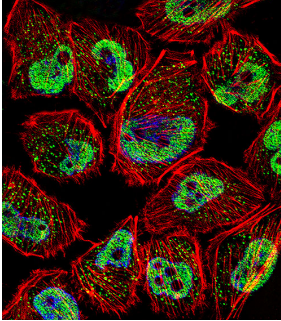
Product Name	Anti-KLF5 Antibody (C-term)
Reactive Species	Human
Description	Boster Bio Anti-KLF5 Antibody (C-term) (Catalog # A00727). Tested in WB, IF, Flow Cytometry, IHC-P application(s). This antibody reacts with Human.
Application	Flow Cytometry, IF, IHC-P, WB
Clonality	Polyclonal
Formulation	Purified polyclonal antibody supplied in PBS with 0.09% (W/V) sodium azide.
Storage Instructions	Maintain refrigerated at 2-8°C for up to 2 weeks. For long-term storage, store at -20°C in small aliquots to prevent freeze-thaw cycles.
Host	Rabbit
Uniprot ID	Q13887

Technical Details

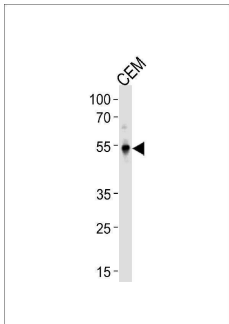
Immunogen	This KLF5 antibody is generated from rabbits immunized with a KLH conjugated synthetic peptide between 341-370 amino acids from the C-terminal region of human KLF5.
Predicted Reactive Species	Mouse
Recommended Detection Systems	Boster recommends Enhanced Chemiluminescent Kit with anti-Rabbit IgG (EK1002) for Western blot, and HRP Conjugated anti-Rabbit IgG Super Vision Assay Kit (SV0002-1) for IHC(P).
Cross Reactivity	No cross reactivity with other proteins.
Isotype	Rabbit IgG
Form	Liquid
Purification	This antibody is prepared by Saturated Ammonium Sulfate (SAS) precipitation followed by dialysis against PBS.
Suggested Dilutions	IF: 1:10-1:50

WB: 1:1000
IHC-P: 1:10-1:50
FC: 1:10-1:50

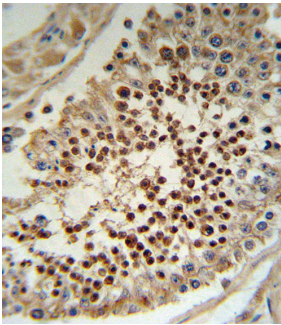
Anti-KLF5 Antibody (C-term) (A00727) Images



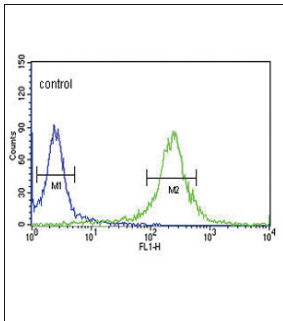
Fluorescent confocal image of U251 cell stained with KLF5 Antibody (C-term). U251 cells were fixed with 4% PFA (20 min), permeabilized with Triton X-100 (0.1%, 10 min), then incubated with KLF5 primary antibody (1:25, 1 h at 37°C). For secondary antibody, Alexa Fluor® 488 conjugated donkey anti-rabbit antibody (green) was used (1:400, 50 min at 37°C). Cytoplasmic actin was counterstained with Alexa Fluor® 555 (red) conjugated Phalloidin (7 units/ml, 1 h at 37°C). Nuclei were counterstained with DAPI (blue) (10 µg/ml, 10 min). KLF5 immunoreactivity is localized to vesicles and Nucleus significantly.



KLF5 Antibody (C-term) western blot analysis in CEM cell line lysates (35 µg/lane). This demonstrates the KLF5 antibody detected the KLF5 protein (arrow).



KLF5 Antibody (C-term) IHC analysis in formalin fixed and paraffin embedded human testis tissue followed by peroxidase conjugation of the secondary antibody and DAB staining. This data demonstrates the use of the KLF5 Antibody (C-term) for immunohistochemistry. Clinical relevance has not been evaluated.



KLF5 Antibody (C-term) flow cytometric analysis of HeLa cells (right histogram) compared to a negative control cell (left histogram). FITC-conjugated goat-anti-rabbit secondary antibodies were used for the analysis.

Submit a product review to Biocompare.com

Submit a review of this product to Biocompare.com to receive a \$20 Amazon.com giftcard! Your reviews help your fellow scientists make the right decisions. Thank you for your contribution.



Anti-KLF5 Antibody (C-term)

For Research Use Only. Not for use in diagnostic procedures.