

Anti-SMAD1/SMAD5 Antibody Picoband™

Catalog Number: A00728-1

Overview

Product Name	Anti-SMAD1/SMAD5 Antibody Picoband™
Reactive Species	Human, Mouse, Rat
Description	Boster Bio Anti-SMAD1/SMAD5 Antibody Picoband™ catalog # A00728-1. Tested in WB applications. This antibody reacts with Human, Mouse, Rat.
Application	WB
Clonality	Polyclonal
Formulation	Each vial contains 4mg Trehalose, 0.9mg NaCl, 0.2mg Na ₂ HPO ₄ , 0.05mg NaN ₃ .
Storage Instructions	Store at -20°C for one year from date of receipt. After reconstitution, at 4°C for one month. It can also be aliquotted and stored frozen at -20°C for six months. Avoid repeated freeze-thaw cycles.
Host	Rabbit
Uniprot ID	Q15797

Technical Details

Immunogen	A synthetic peptide corresponding to a sequence at the N-terminus of human SMAD1/SMAD5, identical to the related mouse and rat sequences.
Predicted Reactive Species	Human
Recommended Detection Systems	Boster recommends Enhanced Chemiluminescent Kit with anti-Rabbit IgG (EK1002) for Western blot.
Cross Reactivity	No cross-reactivity with other proteins.
Isotype	Rabbit IgG
Form	Lyophilized
Concentration	Adding 0.2 ml of distilled water will yield a concentration of 500 ug/ml.
Suggested Dilutions	<p>Dilute the sample so that the expected range of concentrations fall within the detection range of this kit.</p> <p>If the expected range of concentration is unknown, a pilot test should be conducted to decide the optimal dilution ratio for your samples.</p> <p>Some PubMed article(s) citing the expression level of this target are as follows:</p> <p>Boster Bio's internal QC testing used:</p> <p>Western blot, 0.1-0.5ug/ml</p>

Anti-SMAD1/SMAD5 Antibody Picoband™ (A00728-1) Images

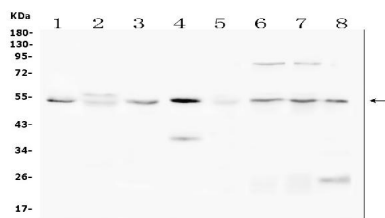


Figure 1. Western blot analysis of SMAD1 using anti-SMAD1 antibody (A00728-1).

Electrophoresis was performed on a 5-20% SDS-PAGE gel at 70V (Stacking gel) / 90V (Resolving gel) for 2-3 hours. The sample well of each lane was loaded with 50ug of sample under reducing conditions.

Lane 1: rat kidney tissue lysate,
Lane 2: rat testis tissue lysate,
Lane 3: mouse brain tissue lysate,
Lane 4: mouse kidney tissue lysate,
Lane 5: mouse testis tissue lysate,
Lane 6: human Hela cell lysate,
Lane 7: human A375 cell lysate,
Lane 8: human HepG2 cell lysate.

After Electrophoresis, proteins were transferred to a Nitrocellulose membrane at 150mA for 50-90 minutes. Blocked the membrane with 5% Non-fat Milk/ TBS for 1.5 hour at RT. The membrane was incubated with rabbit anti-SMAD1 antigen affinity purified polyclonal antibody (Catalog # A00728-1) at 0.5 ug/mL overnight at 4°C, then washed with TBS-0.1%Tween 3 times with 5 minutes each and probed with a goat anti-rabbit IgG-HRP secondary antibody at a dilution of 1:10000 for 1.5 hour at RT. The signal is developed using an Enhanced Chemiluminescent detection (ECL) kit (Catalog # EK1002) with Tanon 5200 system. A specific band was detected for SMAD1 at approximately 52,60KD. The expected band size for SMAD1 is at 48, 52, 60KD.

Submit a product review to Biocompare.com

Submit a review of this product to Biocompare.com to receive a \$20 Amazon.com giftcard! Your reviews help your fellow scientists make the right decisions. Thank you for your contribution.



Anti-SMAD1/SMAD5 Antibody™