

Anti-Smad1 (phospho-S465) Antibody

Catalog Number: A00728S465

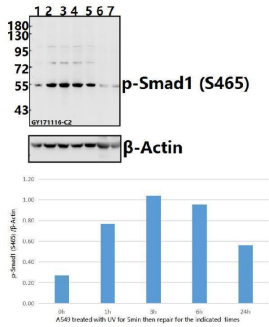
Overview

Product Name	Anti-Smad1 (phospho-S465) Antibody
Reactive Species	Human, Mouse, Rat
Description	Boster Bio Anti-Smad1 (phospho-S465) Antibody catalog # A00728S465. Tested in WB,IHC applications. This antibody reacts with Human,Mouse,Rat.
Application	IHC, WB
Clonality	Polyclonal
Formulation	Rabbit IgG, 1mg/ml in PBS with 0.02% sodium azide, 50% glycerol, pH7.2
Storage Instructions	Store at -20°C for one year. For short term storage and frequent use, store at 4°C for up to one month. Avoid repeated freeze-thaw cycles.
Host	Rabbit
Uniprot ID	Q15797

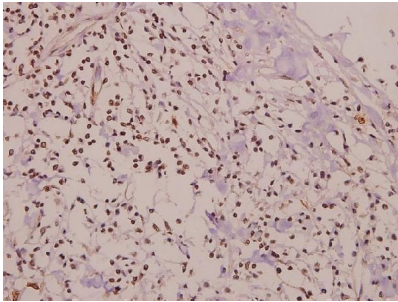
Technical Details

Immunogen	Synthetic phosphopeptide derived from human Smad1 around the phosphorylation site of Serine 465.
Cross Reactivity	No cross reactivity with other proteins.
Isotype	IgG
Form	Liquid
Concentration	1 mg/ml
Purification	The antibody was affinity-purified from rabbit antiserum by affinity-chromatography using epitope-specific immunogen and the purity is > 95% (by SDS-PAGE).
Suggested Dilutions	WB: 1:500-1:1000 IHC: 1:50-1:200

Anti-Smad1 (phospho-S465) Antibody (A00728S465) Images



Western blot (WB) analysis of p-Smad1 (S465) pAb at 1:500 dilution Lane1:A549 whole cell lysate(40ug) Lane2:A549 treated with UV for 5 minutes then repair for 1 hour whole cell lysate(40ug) Lane3:A549 treated with UV for 5 minutes then repair for 3 hours whole cell lysate(40ug) Lane4:A549 treated with UV for 5 minutes then repair for 6 hours whole cell lysate(40ug) Lane5:A549 treated with UV for 5 minutes then repair for 24 hours whole cell lysate(40ug) Lane6:The Uterus tissue lysate of Mouse(40ug) Lane7:The Uterus tissue lysate of Rat(40ug)



Immunohistochemistry (IHC) analyzes of p-Smad1 (S465) pAb in paraffin-embedded human colorectal carcinoma tissue at 1:50.

Submit a product review to Biocompare.com

Submit a review of this product to Biocompare.com to receive a \$20 Amazon.com giftcard! Your reviews help your fellow scientists make the right decisions. Thank you for your contribution.



Anti-Smad1 (phospho-S465) Antibody

For Research Use Only. Not for use in diagnostic procedures.