

## Anti-Phospho-NCAM-L1 (S1181) L1CAM Antibody

Catalog Number: A00729S1181

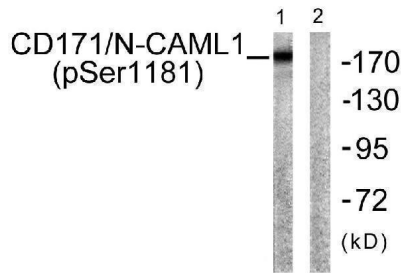
### Overview

|                      |  |
|----------------------|--|
| Product Name         | Anti-Phospho-NCAM-L1 (S1181) L1CAM Antibody  |
| Reactive Species     | Human, Mouse, Rat  |
| Description          | Boster Bio Anti-Phospho-NCAM-L1 (S1181) L1CAM Antibody catalog # A00729S1181. Tested in WB, IHC, IF, ELISA applications. This antibody reacts with Human, Mouse, Rat.  |
| Application          | ELISA, IF, IHC, WB   |
| Clonality            | Polyclonal   |
| Formulation          | Liquid in PBS containing 50% glycerol, 0.5% stabilizing protein and 0.02% sodium azide.<br>*This antibody is supplied in a stabilized formulation.<br>Compatibility with conjugation reactions depends on the chemistry of the conjugation method used. For conjugation methods that are not compatible with the stabilizing components present in this formulation, a carrier-free antibody format is required. |
| Storage Instructions | Store at -20°C for one year. For short term storage and frequent use, store at 4°C for up to one month. Avoid repeated freeze-thaw cycles.   |
| Host                 | Rabbit   |
| Uniprot ID           | P32004   |

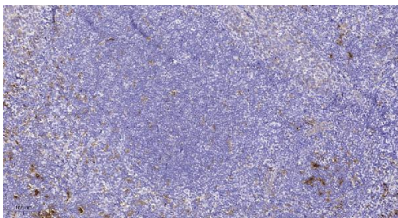
### Technical Details

|                     |  |
|---------------------|--|
| Immunogen           | The antiserum was produced against synthesized peptide derived from human CD171/N-CAML1 around the phosphorylation site of Ser1181. AA range:1147-1196 |
| Cross Reactivity    | No cross reactivity with other proteins.   |
| Isotype             | IgG  |
| Form                | Liquid   |
| Concentration       | 1 mg/ml  |
| Purification        | The antibody was affinity-purified from rabbit antiserum by affinity-chromatography using epitope-specific immunogen.                                  |
| Suggested Dilutions | WB 1:500-1:2000<br>IHC 1:100-1:300<br>ELISA 1:20000<br>IF 1:50-200   |

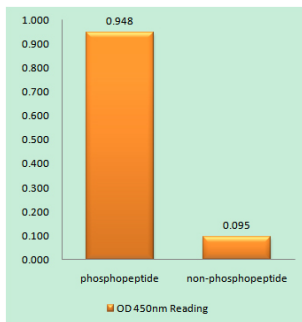
## Anti-Phospho-NCAM-L1 (S1181) L1CAM Antibody (A00729S1181) Images



Western blot analysis of lysates from K562 cells, using CD171/N-CAML1 (Phospho-Ser1181) Antibody. The lane on the right is blocked with the phospho peptide.



Immunohistochemical analysis of paraffin-embedded human tonsil. 1, Tris-EDTA, pH9.0 was used for antigen retrieval. 2 Antibody was diluted at 1:200 (4° overnight). 3, Secondary antibody was diluted at 1:200 (room temperature, 45min).



Enzyme-Linked Immunosorbent Assay (Phospho-ELISA) for Immunogen Phosphopeptide (Phospho-left) and Non-Phosphopeptide (Phospho-right), using CD171/N-CAML1 (Phospho-Ser1181) Antibody

### Submit a product review to Biocompare.com

Submit a review of this product to Biocompare.com to receive a \$20 Amazon.com giftcard! Your reviews help your fellow scientists make the right decisions. Thank you for your contribution.



Anti-Phospho-NCAM-L1 (S1181) L1CAM Antibody

For Research Use Only. Not for use in diagnostic procedures.