

## Anti-Mre11 Antibody

Catalog Number: A00731

### About Mre11

Mre11 is a component of the MRN complex (Mre11/Rad50/Nbs1), which plays a central role in double-strand break (DSB) repair, DNA recombination, maintenance of telomere integrity and meiosis. The complex possesses single-strand endonuclease activity and double-strand-specific 3'-5' exonuclease activity, which are provided by MRE11A. RAD50 may be required to bind DNA ends and hold them close. This could facilitate searches for short or long regions of sequence homology in the recombining DNA templates, and may also stimulate the activity of DNA ligases and/or restrict the nuclease activity of MRE11A to prevent nucleolytic degradation past a given point. The complex may also be required for DNA damage signaling via activation of the ATM kinase. In telomeres, the MRN complex may modulate t-loop formulation. Anti-Mre11 Antibody is useful for researcher interested in DNA Damage and Repair and Nuclear Signaling Research.

### Overview

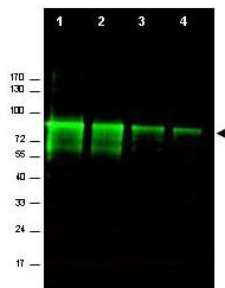
Product Name	Anti-Mre11 Antibody
Reactive Species	Mouse
Description	Boster Bio Anti-Mre11 Antibody (Catalog # A00731). Tested in ELISA, WB applications. This antibody reacts with Mouse.
Application	ELISA, WB
Clonality	Polyclonal
Formulation	0.02 M Potassium Phosphate, 0.15 M Sodium Chloride, pH 7.2, 0.01% (w/v) Sodium Azide
Storage Instructions	Store vial at -20°C prior to opening. Aliquot contents and freeze at -20°C or below for extended storage. Avoid cycles of freezing and thawing. Centrifuge product if not completely clear after standing at room temperature. This product is stable for several weeks at 4°C as an undiluted liquid. Dilute only prior to immediate use. Expiration date is one (1) year from date of opening. (Ship on dry ice.)
Host	Rabbit
Uniprot ID	Q61216

### Technical Details

Immunogen	This affinity purified antibody was prepared from whole rabbit serum produced by repeated immunizations with a recombinant protein corresponding to amino acids 68-706 of mouse Mre11 protein.
Predicted Reactive Species	Chimpanzee
Isotype	IgG
Form	Liquid (sterile filtered)

Concentration	1.05 mg/mL by UV absorbance at 280 nm
Purification	This affinity purified antibody is directed against mouse Mre11 protein. The product was affinity purified from monospecific antiserum by immunoaffinity purification. A BLAST analysis was used to suggest cross-reactivity with Mre11 protein from rat (94% homology). Based on protein sequence homology also expect partial reactivity against Mre11 homologues from macaque (88%), human (84%) and dog (82%). This sequence shows less than 75% homology to homologues from bovine, Xenopus, chicken, chimpanzee and zebrafish sources. Reactivity against homologues from other sources is not known.
Suggested Dilutions	ELISA: 1:10,000 - 1:50,000 WB: 1:500 - 1:2,000 This affinity purified antibody has been tested for use in ELISA and western blot. Specific conditions for reactivity should be optimized by the end user. Expect a band approximately 80 kDa in size corresponding to Mre11 by western blotting in the appropriate cell lysate or extract.

## Anti-Mre11 Antibody (A00731) Images



Western blot using Boster's Affinity Purified anti-Mre11 antibody shows detection of a band ~80 kDa corresponding to mouse Mre11 (arrowhead). Lanes 1-4 contain 0.5 ug, 0.3 ug, 0.1 ug and 0.05 ug of purified mouse Mre11 protein, respectively. After 4-20% SDS-PAGE and transfer onto nitrocellulose, the membrane was blocked and then probed with the primary antibody diluted to 1:1,000 overnight at 4°C. The membrane was then washed and reacted with a 1:10,000 dilution of IRDye800 conjugated Gt-a-Rabbit IgG [H&L] MX (611-132-122) for 45 min at room temperature. IRDye800 fluorescence image was captured using the Odyssey® Infrared Imaging System developed by LI-COR. IRDye is a trademark of LI-COR, Inc. Other detection systems will yield similar results.

## Submit a product review to Biocompare.com

Submit a review of this product to Biocompare.com to receive a \$20 Amazon.com giftcard! Your reviews help your fellow scientists make the right decisions. Thank you for your contribution.



Anti-Mre11 Antibody

For Research Use Only. Not for use in diagnostic procedures.