

## Anti-PKC Alpha (phospho-T638) PRKCA Antibody

Catalog Number: A00743T638

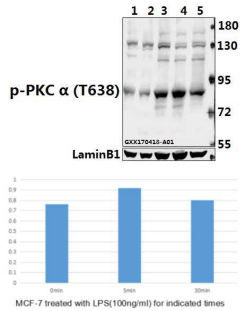
### Overview

Product Name	Anti-PKC Alpha (phospho-T638) PRKCA Antibody
Reactive Species	Human, Mouse, Rat
Description	Boster Bio Anti-PKC Alpha (phospho-T638) PRKCA Antibody catalog # A00743T638. Tested in WB,IHC,IP applications. This antibody reacts with Human,Mouse,Rat.
Application	IP, IHC, WB
Clonality	Polyclonal
Formulation	Rabbit IgG, 1mg/ml in PBS with 0.02% sodium azide, 50% glycerol, pH7.2
Storage Instructions	Store at -20°C for one year. For short term storage and frequent use, store at 4°C for up to one month. Avoid repeated freeze-thaw cycles.
Host	Rabbit
Uniprot ID	P17252

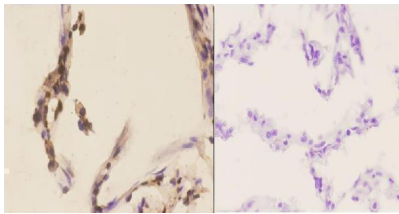
### Technical Details

Immunogen	Synthetic phosphopeptide derived from human PKC alpha around the phosphorylation site of Threonine 638.
Cross Reactivity	No cross reactivity with other proteins.
Isotype	IgG
Form	Liquid
Concentration	1 mg/ml
Purification	The antibody was affinity-purified from rabbit antiserum by affinity-chromatography using epitope-specific immunogen and the purity is > 96% (by SDS-PAGE).
Suggested Dilutions	WB: 1:500-1:1000 IHC: 1:50-1:200 IP: 1:10-1:100

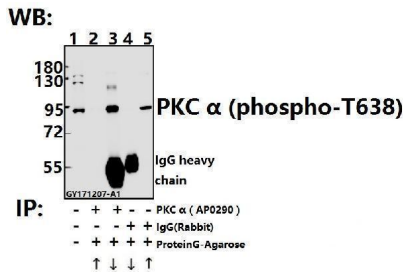
## Anti-PKC Alpha (phospho-T638) PRKCA Antibody (A00743T638) Images



Western blot (WB) analysis of PKC alpha (phospho-T638) polyclonal antibody at 1:500 dilution Lane1:PC12 whole cell lysate(40ug) Lane2:CT26 whole cell lysate(40ug) Lane3:MCF-7 treated with LPS(100ng/ml) for 30 minutes whole cell lysate Lane4:MCF-7 treated with LPS(100ng/ml) for 5 minutes whole cell lysate Lane5:MCF-7 whole cell lysate



Immunohistochemistry (IHC) analyzes of p-PKC alpha (T638) pAb in paraffin-embedded human lung carcinoma tissue at 1:50, showing cytoplasmic and nucleus staining. Negative control (the right) Using PBS instead of primary antibody, secondary antibody is Goat Anti-Rabbit IgG-biotin followed by avidin-peroxidase.



Immunoprecipitation of L02 cell lysate using PKC alpha (phospho-T638) pAb (Sepharose Bead Conjugate) #BD0048(lane 2 and lane 3) and Nonspecific IgG Control (Sepharose Bead Conjugate)#BD0048 (lane 4) .Lane 1 is 30% input. The western blot was probed using SHP-2 (E574) pAb. "↑" "↓" deposition

### Submit a product review to Biocompare.com

Submit a review of this product to Biocompare.com to receive a \$20 Amazon.com giftcard! Your reviews help your fellow scientists make the right decisions. Thank you for your contribution.



Anti-PKC Alpha (phospho-T638) PRKCA Antibody

For Research Use Only. Not for use in diagnostic procedures.