

## Anti-Phospho-PKC alpha (Y657) PRKCA Antibody

Catalog Number: A00743Y657

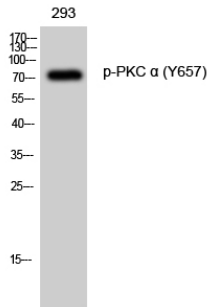
### Overview

|                      |  |
|----------------------|--|
| Product Name         | Anti-Phospho-PKC alpha (Y657) PRKCA Antibody   |
| Reactive Species     | Human, Mouse, Rat  |
| Description          | Boster Bio Anti-Phospho-PKC alpha (Y657) PRKCA Antibody catalog # A00743Y657. Tested in WB, IHC applications. This antibody reacts with Human, Mouse, Rat.   |
| Application          | IHC, WB  |
| Clonality            | Polyclonal   |
| Formulation          | Liquid in PBS containing 50% glycerol, 0.5% stabilizing protein and 0.02% sodium azide.<br>*This antibody is supplied in a stabilized formulation.<br>Compatibility with conjugation reactions depends on the chemistry of the conjugation method used. For conjugation methods that are not compatible with the stabilizing components present in this formulation, a carrier-free antibody format is required. |
| Storage Instructions | Store at -20°C for one year. For short term storage and frequent use, store at 4°C for up to one month. Avoid repeated freeze-thaw cycles.   |
| Host                 | Rabbit   |
| Uniprot ID           | P17252   |

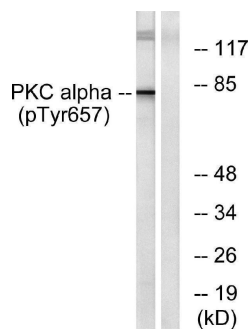
### Technical Details

|                     |   |
|---------------------|---|
| Immunogen           | The antiserum was produced against synthesized peptide derived from human PKC alpha around the phosphorylation site of Tyr657. AA range:623-672 |
| Cross Reactivity    | No cross reactivity with other proteins.  |
| Isotype             | IgG   |
| Form                | Liquid  |
| Concentration       | 1 mg/ml   |
| Purification        | The antibody was affinity-purified from rabbit antiserum by affinity-chromatography using epitope-specific immunogen.                           |
| Suggested Dilutions | WB 1:500-2000<br>IHC 1:50-300   |

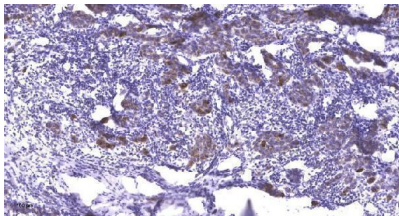
## Anti-Phospho-PKC alpha (Y657) PRKCA Antibody (A00743Y657) Images



Western Blot analysis of 293 cells using Phospho-PKC alpha (Y657) Polyclonal Antibody diluted at 1:1000



Western blot analysis of lysates from COLO205 cells, using PKC alpha (Phospho-Tyr657) Antibody. The lane on the right is blocked with the phospho peptide.



Immunohistochemical analysis of paraffin-embedded human Breast cancer. 1, Antibody was diluted at 1:200 (4° overnight). 2, Tris-EDTA, pH9.0 was used for antigen retrieval. 3, Secondary antibody was diluted at 1:200 (room temperature, 45min).

### Submit a product review to Biocompare.com

Submit a review of this product to Biocompare.com to receive a \$20 Amazon.com giftcard! Your reviews help your fellow scientists make the right decisions. Thank you for your contribution.



Anti-Phospho-PKC alpha (Y657) PRKCA Antibody

For Research Use Only. Not for use in diagnostic procedures.