

Anti-MIP-3 alpha CCL20 Antibody

Catalog Number: A00748

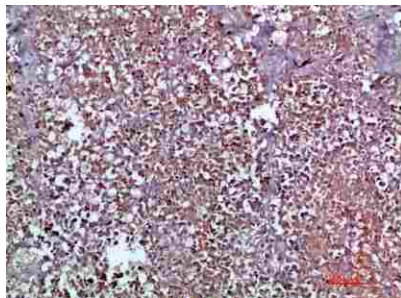
Overview

Product Name	Anti-MIP-3 alpha CCL20 Antibody
Reactive Species	Human, Mouse
Description	Boster Bio Anti-MIP-3 alpha CCL20 Antibody catalog # A00748. Tested in IHC, IF, ELISA applications. This antibody reacts with Human, Mouse.
Application	ELISA, IF, IHC
Clonality	Polyclonal
Formulation	PBS, pH 7.4, containing 0.02% sodium azide as Preservative and 50% Glycerol.
Storage Instructions	Store at -20°C for one year. For short term storage and frequent use, store at 4°C for up to one month. Avoid repeated freeze-thaw cycles.
Host	Rabbit
Uniprot ID	P78556

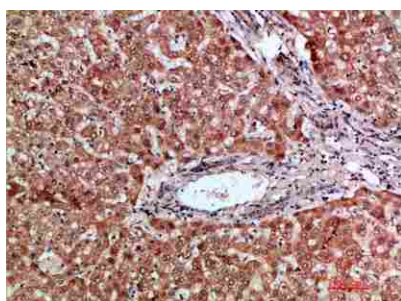
Technical Details

Immunogen	Synthetic peptide from human protein at AA range: 31-80
Isotype	IgG
Form	Liquid
Concentration	1 mg/ml
Purification	Immunogen affinity purified
Suggested Dilutions	IHC 1:50-200 ELISA 1:10000-20000 IF 1:50-200

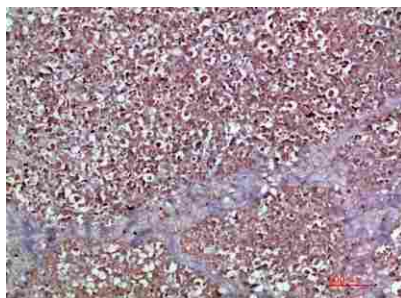
Anti-MIP-3 alpha CCL20 Antibody (A00748) Images



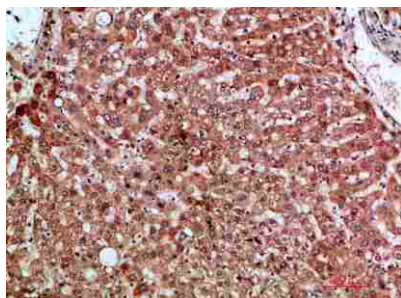
Immunohistochemical analysis of paraffin-embedded human-pancreas, antibody was diluted at 1:200.



Immunohistochemical analysis of paraffin-embedded human-liver, antibody was diluted at 1:200.



Immunohistochemical analysis of paraffin-embedded human-pancreas, antibody was diluted at 1:200.



Immunohistochemical analysis of paraffin-embedded human-liver, antibody was diluted at 1:200.

1 Publications Citing This Product

1. PubMed ID: 22082565, Chen D, Hu Q, Mao C, Jiao Z, Wang S, Yu L, Xu Y, Dai D, Yin L, Xu H. Cell Immunol. 2012;272(2):166-74. Doi: 10.1016/J.Cellimm.2011.10.015. Epub 2011 Oct 28. Increased IL-17-Producing Cd4(+) T Cells In Patients With Esophageal Cancer.

Visit bosterbio.com/anti-mip-3-alpha-antibody-a00748-boster.html to see all 1 publications.

Submit a product review to Biocompare.com

Submit a review of this product to Biocompare.com to receive a \$20 Amazon.com giftcard! Your reviews help your fellow scientists make the right decisions. Thank you for your contribution.



Anti-MIP-3 alpha CCL20 Antibody

For Research Use Only. Not for use in diagnostic procedures.