

Anti-MIP-3 Alpha/CCL20 Antibody Picoband®

Catalog Number: A00748-2

About Ccl20

Macrophage Inflammatory Protein 3alpha (MIP3alpha), also called Chemokine, cc motif, ligand 20 (CCL20). The MIP-3alpha/CCL20 gene was cloned and sequenced, revealing a four exon, three intron structure, and was localized by FISH analysis to 2q35-q36. MIP3alpha is predominantly expressed in lymph nodes, appendix, PBL, fetal liver, fetal lung and several cell lines. MIP3alpha/CCL20 and its receptor CCR6 are markedly up-regulated in psoriasis, and they may play a role in the recruitment of T cells to lesional psoriatic skin. And Alanine MIP-3alpha and Serine MIP-3alpha, the two forms of MIP3alpha, that differ by one amino acid at the predicted signal peptide cleavage site. Both of them were chemically synthesized and tested for biological activity. And both flu antigen plus IL-2-activated CD4 (+) and CD8 (+) T lymphoblasts and cord blood-derived dendritic cells responded to Ser and Ala MIP-3alpha.

Overview

Product Name	Anti-MIP-3 Alpha/CCL20 Antibody Picoband®
Reactive Species	Mouse, Rat
Description	Boster Bio Anti-MIP-3 Alpha/CCL20 Antibody Picoband® catalog # A00748-2. Tested in ELISA, WB applications. This antibody reacts with Mouse, Rat. The brand Picoband indicates this is a premium antibody that guarantees superior quality, high affinity, and strong signals with minimal background in Western blot applications. Only our best-performing antibodies are designated as Picoband, ensuring unmatched performance.
Application	WB, ELISA (Cap)
Clonality	Polyclonal
Formulation	Each vial contains 4mg Trehalose, 0.9mg NaCl, 0.2mg Na2HPO4, 0.05mg NaN3.
Storage Instructions	Store at -20°C for one year from date of receipt. After reconstitution, at 4°C for one month. It can also be aliquotted and stored frozen at -20°C for six months. Avoid repeated freeze-thaw cycles.
Host	Rabbit
Uniprot ID	O89093

Technical Details

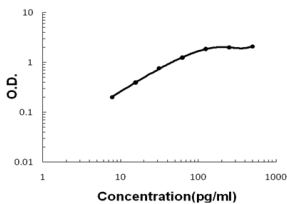
Immunogen	E. coli-derived mouse MIP-3 Alpha/CCL20 recombinant protein (Position: A28-M97).
Recommended Detection Systems	Boster recommends Enhanced Chemiluminescent Kit with anti-Rabbit IgG (EK1002) for Western blot.
Cross Reactivity	No cross-reactivity with other proteins.
Isotype	Rabbit IgG

Form	Lyophilized
Concentration	Adding 0.2 ml of distilled water will yield a concentration of 500 ug/ml.
Purification	Immunogen affinity purified.
Suggested Dilutions	Western blot, 0.1-0.5ug/ml ELISA (Cap), 1-5ug/ml

Anti-MIP-3 Alpha/CCL20 Antibody Picoband® (A00748-2) Images



Western blot analysis of MIP-3 Alpha/CCL20 using anti-MIP-3 Alpha/CCL20 antibody (A00748-2). Electrophoresis was performed on a 5-20% SDS-PAGE gel at 70V (Stacking gel) / 90V (Resolving gel) for 2-3 hours. The sample well of each lane was loaded with 50ug of sample under reducing conditions. Lane 1: rat testis tissue lysates, Lane 2: mouse testis tissue lysates. After Electrophoresis, proteins were transferred to a Nitrocellulose membrane at 150mA for 50-90 minutes. Blocked the membrane with 5% Non-fat Milk/TBS for 1.5 hour at RT. The membrane was incubated with rabbit anti-MIP-3 Alpha/CCL20 antigen affinity purified polyclonal antibody (Catalog # A00748-2) at 0.5 ug/mL overnight at 4 then washed with TBS-0.1%Tween 3 times with 5 minutes each and probed with a goat anti-rabbit IgG-HRP secondary antibody at a dilution of 1:10000 for 1.5 hour at RT. The signal is developed using an Enhanced Chemiluminescent detection (ECL) kit (Catalog # EK1002) with Tanon 5200 system. A specific band was detected for MIP-3 Alpha/CCL20 at approximately 14KD. The expected band size for MIP-3 Alpha/CCL20 is at 14KD.



Sandwich ELISA - Recombinant mouse MIP-3 Alpha/CCL20 protein standard curve. Use in combination with reagents from Mouse MIP-3 Alpha/CCL20 ELISA Kit EZ-Set (DIY Antibody Pairs) (EZ0454).

Submit a product review to Biocompare.com

Submit a review of this product to Biocompare.com to receive a \$20 Amazon.com giftcard! Your reviews help your fellow scientists make the right decisions. Thank you for your contribution.



Anti-MIP-3 Alpha/CCL20 Antibody

For Research Use Only. Not for use in diagnostic procedures.