

## Anti-Myotubularin MTM1 Antibody

Catalog Number: A00749

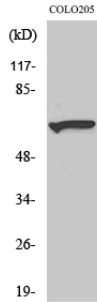
### Overview

Product Name	Anti-Myotubularin MTM1 Antibody
Reactive Species	Human, Mouse
Description	Boster Bio Anti-Myotubularin MTM1 Antibody catalog # A00749. Tested in ELISA, WB applications. This antibody reacts with Human, Mouse.
Application	IHC, WB
Clonality	Polyclonal
Formulation	Liquid in PBS containing 50% glycerol, 0.5% stabilizing protein and 0.02% sodium azide. *This antibody is supplied in a stabilized formulation. Compatibility with conjugation reactions depends on the chemistry of the conjugation method used. For conjugation methods that are not compatible with the stabilizing components present in this formulation, a carrier-free antibody format is required.
Storage Instructions	Store at -20°C for one year. For short term storage and frequent use, store at 4°C for up to one month. Avoid repeated freeze-thaw cycles.
Host	Rabbit
Uniprot ID	Q13496

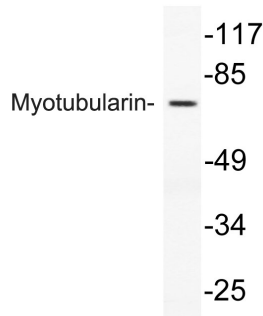
### Technical Details

Immunogen	The antiserum was produced against synthesized peptide derived from human Myotubularin. AA range:241-290
Cross Reactivity	No cross reactivity with other proteins.
Isotype	IgG
Form	Liquid
Concentration	1 mg/ml
Purification	The antibody was affinity-purified from rabbit antiserum by affinity-chromatography using epitope-specific immunogen.
Suggested Dilutions	WB 1:500-2000 IHC 1:50-300

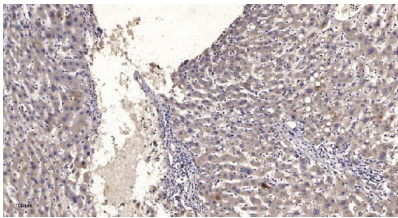
## Anti-Myotubularin MTM1 Antibody (A00749) Images



Western Blot analysis of various cells using Myotubularin Polyclonal Antibody diluted at 1:500



Western blot analysis of lysate from COLO205 cells, using Myotubularin antibody.



Immunohistochemical analysis of paraffin-embedded human liver cancer. 1, Antibody was diluted at 1:200 (4° overnight). 2, Tris-EDTA, pH9.0 was used for antigen retrieval. 3, Secondary antibody was diluted at 1:200 (room temperature, 45min).

### Submit a product review to Biocompare.com

Submit a review of this product to Biocompare.com to receive a \$20 Amazon.com giftcard! Your reviews help your fellow scientists make the right decisions. Thank you for your contribution.



Anti-Myotubularin MTM1 Antibody

For Research Use Only. Not for use in diagnostic procedures.