

Anti-Myotubularin (Y290) MTM1 Antibody

Catalog Number: A00749Y290

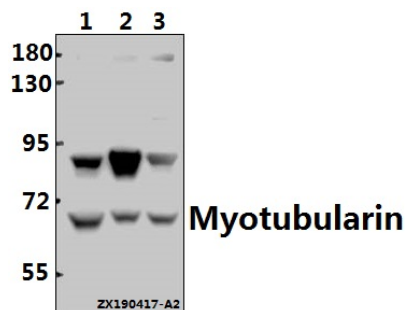
Overview

Product Name	Anti-Myotubularin (Y290) MTM1 Antibody
Reactive Species	Human, Mouse
Description	Boster Bio Anti-Myotubularin (Y290) MTM1 Antibody catalog # A00749Y290. Tested in WB,IHC applications. This antibody reacts with Human,Mouse.
Application	IHC, WB
Clonality	Polyclonal
Formulation	Rabbit IgG, 1mg/ml in PBS with 0.02% sodium azide, 50% glycerol, pH7.2
Storage Instructions	Store at -20°C for one year. For short term storage and frequent use, store at 4°C for up to one month. Avoid repeated freeze-thaw cycles.
Host	Rabbit
Uniprot ID	Q13496

Technical Details

Immunogen	Synthetic peptide, corresponding to amino acids 256-3111 of Human Myotubularin.
Cross Reactivity	No cross reactivity with other proteins.
Isotype	IgG
Form	Liquid
Concentration	1 mg/ml
Purification	The antibody was affinity-purified from rabbit antiserum by affinity-chromatography using epitope-specific immunogen and the purity is > 95% (by SDS-PAGE).
Suggested Dilutions	WB: 1:500-1:1000 IHC: 1:50-1:200

Anti-Myotubularin (Y290) MTM1 Antibody (A00749Y290) Images



Western blot (WB) analysis of Myotubularin (Y290) pAb at 1:2000 dilution Lane1:SGC7901 whole cell lysate(40ug) Lane2:HCT116 whole cell lysate(40ug) Lane3:Panc1 whole cell lysate(40ug)

Submit a product review to Biocompare.com

Submit a review of this product to Biocompare.com to receive a \$20 Amazon.com giftcard! Your reviews help your fellow scientists make the right decisions. Thank you for your contribution.



Anti-Myotubularin (Y290) MTM1 Antibody

For Research Use Only. Not for use in diagnostic procedures.