

## Anti-DISC1 Antibody

Catalog Number: A00750

### About DISC1

Disrupted in schizophrenia 1 (DISC1) is a candidate gene for susceptibility to schizophrenia. It was discovered through chromosomal analysis of a large Scottish family whose members exhibited schizophrenia and related psychiatric disorders. Through yeast two-hybrid screening, it was discovered that DISC1 interacts with many members of the centrosome and cytoskeletal system including MAP1A and Nudel. More recently, DISC1 has been found to regulate the transport of a complex containing Nudel, the lissencephaly-1 (LIS1) protein, and 14-3-3epsilon from neuronal cell bodies to the axons by the action of the microtubule-dependent directed motor protein kinesin-1, also known as KIF5A. Decreased expression of DISC1 in neurons caused an accelerated rate of neuronal integration, resulting in aberrant morphological development, suggesting that DISC1 plays a role in dendritic development and synapse formation.

### Overview

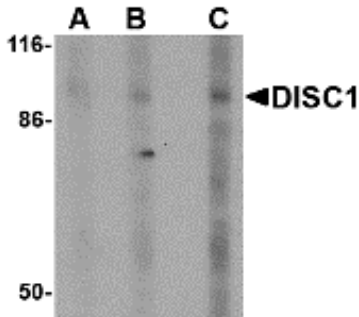
Product Name	Anti-DISC1 Antibody
Reactive Species	Human, Mouse
Description	Boster Bio Anti-DISC1 Antibody (Catalog # A00750). Tested in ELISA, WB, ICC, IF applications. This antibody reacts with Human, Mouse.
Application	ELISA, IF, ICC, WB
Clonality	Polyclonal
Formulation	DISC1 Antibody is supplied in PBS containing 0.02% sodium azide.
Storage Instructions	DISC1 antibody can be stored at 4°C for three months and -20°C, stable for up to one year. Avoid repeated freeze-thaw cycles. Antibodies should not be exposed to prolonged high temperatures.
Host	Rabbit
Uniprot ID	Q9NRI5

### Technical Details

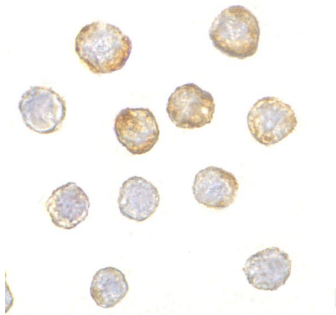
Immunogen	DISC1 antibody was raised against an 18 amino acid synthetic peptide from near the center of human DISC1. The immunogen is located within amino acids 350 - 400 of DISC1.
Predicted Reactive Species	Rat
Cross Reactivity	At least four isoforms of DISC1 are known to exist; this antibody will detect the three longest isoforms.
Isotype	IgG
Form	Liquid

Concentration	1 mg/mL
Purification	DISC1 Antibody is affinity chromatography purified via peptide column.
Suggested Dilutions	<p>DISC1 antibody can be used for detection of DISC1 by Western blot at 0.5 - 2 ug/mL. Antibody can also be used for immunocytochemistry starting at 5 ug/mL. For immunofluorescence start at 20 ug/mL.</p> <p>Antibody validated: Western Blot in human samples; Immunocytochemistry in human samples and Immunofluorescence in human samples. All other applications and species not yet tested. Optimal dilutions for each application should be determined by the researcher.</p>

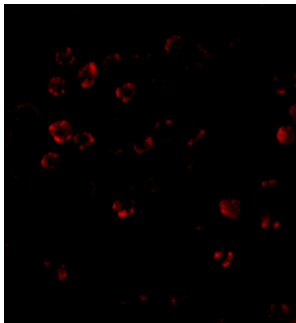
## Anti-DISC1 Antibody (A00750) Images



Western blot analysis of DISC1 in SK-N-SH cell lysate with DISC1 antibody at (A) 0.5



Immunocytochemistry of DISC1 in HeLa cells with DISC1 antibody at 5 ug/mL.



Immunofluorescence of DISC1 in HeLa cells with DISC1 antibody at 20 ug/mL.

### Submit a product review to [Biocompare.com](https://www.biocompare.com)

Submit a review of this product to [Biocompare.com](https://www.biocompare.com) to receive a \$20 Amazon.com giftcard! Your reviews help your fellow scientists make the right decisions. Thank you for your contribution.



Anti-DISC1 Antibody