

Anti-Smpd1 Antibody Picoband®

Catalog Number: A00752-1

About Smpd1

Sphingomyelin phosphodiesterase 1 (SMPD1), also known as acid sphingomyelinase (ASM), is an enzyme that in humans is encoded by the SMPD1 gene. Enables acid sphingomyelin phosphodiesterase activity and zinc ion binding activity. Involved in ceramide biosynthetic process; positive regulation of apoptotic process; and response to ionizing radiation. Acts upstream of or within ceramide metabolic process; cholesterol metabolic process; and sphingomyelin catabolic process. Located in extracellular space. Is expressed in several structures, including alimentary system; integumental system; nervous system; sensory organ; and skeleton. Used to study Niemann-Pick disease. Human ortholog(s) of this gene implicated in Niemann-Pick disease; Niemann-Pick disease type A; and Niemann-Pick disease type B. Orthologous to human SMPD1 (sphingomyelin phosphodiesterase 1).

Overview

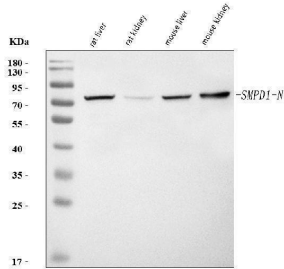
Product Name	Anti-Smpd1 Antibody Picoband®
Reactive Species	Mouse, Rat
Description	Boster Bio Anti-Smpd1 Antibody Picoband® catalog # A00752-1. Tested in ELISA, WB applications. This antibody reacts with Mouse, Rat. The brand Picoband indicates this is a premium antibody that guarantees superior quality, high affinity, and strong signals with minimal background in Western blot applications. Only our best-performing antibodies are designated as Picoband, ensuring unmatched performance.
Application	ELISA, WB
Clonality	Polyclonal
Formulation	Each vial contains 4 mg Trehalose, 0.9 mg NaCl, 0.2 mg Na ₂ HPO ₄ .
Storage Instructions	At -20°C for one year from date of receipt. After reconstitution, at 4°C for one month. It can also be aliquotted and stored frozen at -20°C for six months. Avoid repeated freezing and thawing.
Host	Rabbit
Uniprot ID	Q04519

Technical Details

Immunogen	E.coli-derived mouse Smpd1 recombinant protein (Position: D204-M558).
Recommended Detection Systems	Boster recommends Enhanced Chemiluminescent Kit with anti-Rabbit IgG (EK1002) for Western blot.
Cross Reactivity	No cross-reactivity with other proteins.
Isotype	Rabbit IgG

Form	Lyophilized
Concentration	Adding 0.2 ml of distilled water will yield a concentration of 500 ug/ml.
Purification	Immunogen affinity purified.
Suggested Dilutions	Western blot, 0.25-0.5 ug/ml, Mouse, Rat ELISA, 0.1-0.5 ug/ml, -

Anti-Smpd1 Antibody Picoband® (A00752-1) Images



Western blot analysis of Smpd1 using anti-Smpd1 antibody (A00752-1). Electrophoresis was performed on a 5-20% SDS-PAGE gel at 70V (Stacking gel) / 90V (Resolving gel) for 2-3 hours. The sample well of each lane was loaded with 30 ug of sample under reducing conditions. Lane 1: rat liver tissue lysates, Lane 2: rat kidney tissue lysates, Lane 3: mouse liver tissue lysates, Lane 4: mouse kidney tissue lysates. After electrophoresis, proteins were transferred to a nitrocellulose membrane at 150 mA for 50-90 minutes. Blocked the membrane with 5% non-fat milk/TBS for 1.5 hour at RT. The membrane was incubated with rabbit anti-Smpd1 antigen affinity purified polyclonal antibody (Catalog # A00752-1) at 0.5 ug/mL overnight at 4°C, then washed with TBS-0.1%Tween 3 times with 5 minutes each and probed with a goat anti-rabbit IgG-HRP secondary antibody at a dilution of 1:5000 for 1.5 hour at RT. The signal is developed using an Enhanced Chemiluminescent detection (ECL) kit (Catalog # EK1002) with Tanon 5200 system. A specific band was detected for Smpd1 at approximately 70 kDa. The expected band size for Smpd1 is at 70 kDa.

Submit a product review to [Biocompare.com](https://www.biocompare.com)

Submit a review of this product to [Biocompare.com](https://www.biocompare.com) to receive a \$20 Amazon.com giftcard! Your reviews help your fellow scientists make the right decisions. Thank you for your contribution.



Anti-Smpd1 Antibody

For Research Use Only. Not for use in diagnostic procedures.