

Anti-CKR-4 CCR4 Antibody

Catalog Number: A00755-3

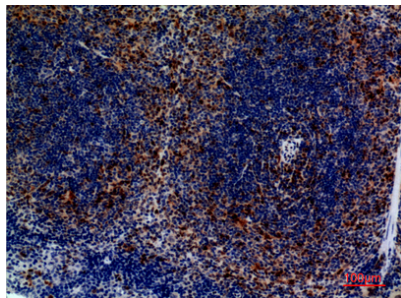
Overview

Product Name	Anti-CKR-4 CCR4 Antibody
Reactive Species	Human, Mouse, Rat
Description	Boster Bio Anti-CKR-4 CCR4 Antibody catalog # A00755-3. Tested in ELISA, IHC, WB applications. This antibody reacts with Human, Mouse, Rat.
Application	ELISA, IF, IHC, WB
Clonality	Polyclonal
Formulation	Liquid in PBS containing 50% glycerol, 0.5% stabilizing protein and 0.02% sodium azide. *This antibody is supplied in a stabilized formulation. Compatibility with conjugation reactions depends on the chemistry of the conjugation method used. For conjugation methods that are not compatible with the stabilizing components present in this formulation, a carrier-free antibody format is required.
Storage Instructions	Store at -20°C for one year. For short term storage and frequent use, store at 4°C for up to one month. Avoid repeated freeze-thaw cycles.
Host	Rabbit
Uniprot ID	P51679

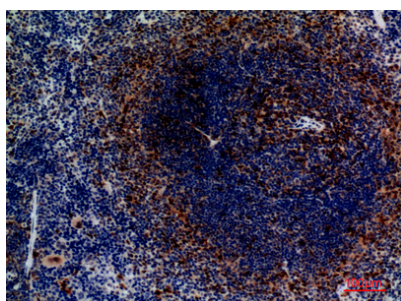
Technical Details

Immunogen	The antiserum was produced against synthesized peptide derived from the N-terminal region of human CCR4. AA range:1-50
Cross Reactivity	No cross reactivity with other proteins.
Isotype	IgG
Form	Liquid
Concentration	1 mg/ml
Purification	The antibody was affinity-purified from rabbit anti-serum by affinity-chromatography.
Suggested Dilutions	WB 1:500-1:2000 IHC: 1:100-300 ELISA 1:20000 IF 1:50-200

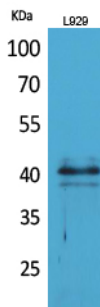
Anti-CKR-4 CCR4 Antibody (A00755-3) Images



Immunohistochemical analysis of paraffin-embedded mouse spleen, antibody was diluted at 1:100



Immunohistochemical analysis of paraffin-embedded mouse spleen, antibody was diluted at 1:100



Western blot analysis of L929 cells using CKR-4 Polyclonal Antibody.. Secondary antibody was diluted at 1:20000

Submit a product review to [Biocompare.com](https://www.biocompare.com)

Submit a review of this product to [Biocompare.com](https://www.biocompare.com) to receive a \$20 Amazon.com giftcard! Your reviews help your fellow scientists make the right decisions. Thank you for your contribution.



Anti-CKR-4 CCR4 Antibody

For Research Use Only. Not for use in diagnostic procedures.