

Anti-ACE2 (K465) Antibody

Catalog Number: A00756-1

About ACE2

Couples tyrosine kinase signals with the activation of the Rho/Rac GTPases, thus leading to cell differentiation and/or proliferation.

Ana V. Miletic, J. Biol. Chem., Dec 2006; 281: 38257 - 38265.

Christopher C. Stebbins, Mol. Cell. Biol., Sep 2003; 23: 6291 - 6299.

Vered Schapira, Cancer Res., Jun 2006; 66: 6183 - 6191.

Maya Groysman, J. Biol. Chem., Dec 2002; 277: 50121 - 50130.

Overview

Product Name	Anti-ACE2 (K465) Antibody
Reactive Species	Human, Mouse, Rat
Description	Boster Bio Anti-ACE2 (K465) Antibody catalog # A00756-1. Tested in IHC applications. This antibody reacts with Human, Mouse, Rat.
Application	IHC
Clonality	Polyclonal
Formulation	Rabbit IgG, 1mg/ml in PBS with 0.02% sodium azide, 50% glycerol, pH7.2
Storage Instructions	Store at -20°C for one year. For short term storage and frequent use, store at 4°C for up to one month. Avoid repeated freeze-thaw cycles.
Host	Rabbit
Uniprot ID	Q9BYF1

Technical Details

Immunogen	The antiserum was produced against synthesized peptide derived from the N-terminal region of human CCR4 at amino acid range 1-50
Predicted Reactive Species	Boar, Bovine, Canine, Golden Hamster
Cross Reactivity	No cross reactivity with other proteins.
Isotype	IgG
Form	Liquid
Concentration	1 mg/ml

Purification	The antibody was affinity-purified from rabbit antiserum by affinity-chromatography using epitope-specific immunogen and the purity is > 95% (by SDS-PAGE).
Suggested Dilutions	<p>Dilute the sample so that the expected range of concentrations fall within the detection range of this kit.</p> <p>If the expected range of concentration is unknown, a pilot test should be conducted to decide the optimal dilution ratio for your samples.</p> <p>Some PubMed article(s) citing the expression level of this target are as follows:</p> <p>Boster Bio's internal QC testing used:</p> <p>IHC: 1:50-1:200</p>

Anti-ACE2 (K465) Antibody (A00756-1) Images

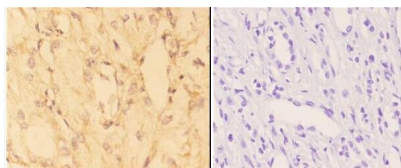


Figure 1. Immunohistochemistry validation of ACE2 using Anti-ACE2 (K465) Antibody (A00756-1).

Immunohistochemistry (IHC) analyzes of ACE2 (K465) pAb in paraffin-embedded human kidney carcinoma tissue at 1:50

Submit a product review to Biocompare.com

Submit a review of this product to Biocompare.com to receive a \$20 Amazon.com giftcard! Your reviews help your fellow scientists make the right decisions. Thank you for your contribution.



Anti-ACE2 (K465) Antibody