

## Anti-ACE2 Antibody

Catalog Number: A00756-2

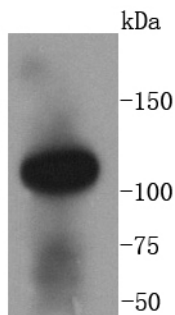
### Overview

Product Name	Anti-ACE2 Antibody
Reactive Species	Human, Mouse, Rat
Description	Boster Bio Anti-ACE2 Antibody catalog # A00756-2. Tested in WB,IHC,IF applications. This antibody reacts with Human,Mouse,Rat.
Application	IF, IHC, WB
Clonality	Polyclonal
Formulation	Rabbit IgG, 1mg/ml in PBS with 0.02% sodium azide, 50% glycerol, pH7.2
Storage Instructions	Store at -20°C for one year. For short term storage and frequent use, store at 4°C for up to one month. Avoid repeated freeze-thaw cycles.
Host	Rabbit
Uniprot ID	Q9BYF1

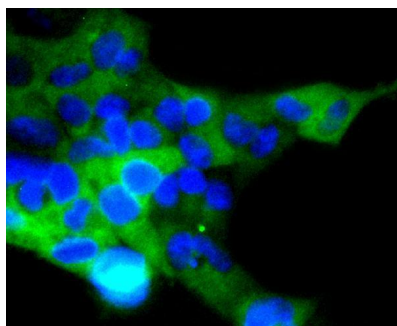
### Technical Details

Immunogen	recombinant protein
Cross Reactivity	No cross reactivity with other proteins.
Isotype	IgG
Form	Liquid
Concentration	1 mg/ml
Purification	ProA affinity purified
Suggested Dilutions	WB: 1:500-1:2000 IHC: 1:50-1:200 IF: 1:50-1:200

## Anti-ACE2 Antibody (A00756-2) Images



Western blot analysis of ACE2 on human kidney lysates using anti-ACE2 antibody at 1/1,000 dilution.



ICC staining ACE2 in 293 cells (green). The nuclear counterstain is DAPI (blue). Cells were fixed in paraformaldehyde, permeabilised with 0.25% Triton X100/PBS.

### Submit a product review to [Biocompare.com](https://www.biocompare.com)

Submit a review of this product to [Biocompare.com](https://www.biocompare.com) to receive a \$20 Amazon.com giftcard! Your reviews help your fellow scientists make the right decisions. Thank you for your contribution.



Anti-ACE2 Antibody

For Research Use Only. Not for use in diagnostic procedures.