

Anti-Bub1 Antibody

Catalog Number: A00776

About BUB1

Bub1 was initially identified as the mammalian homolog to the yeast protein through a cDNA screen. Bub1 encodes a kinase involved in the formation of the spindle checkpoint, an important mechanism that ensures high fidelity mitotic chromosome segregation. It is thought to be required for assembly of a functional inner centromere, sister chromatid cohesion via targeting of the Shugoshin protein and metaphase congression. Bub1 functions by phosphorylating cdc20, a member of the mitotic checkpoint complex and activating the spindle checkpoint. A related protein kinase Bub3 interacts with Bub1 and targets it to kinetochores prior to chromosome alignment. Mutations in bub1 have been associated with aneuploidy and several forms of cancer.

Overview

Product Name	Anti-Bub1 Antibody
Reactive Species	Human, Mouse
Description	Boster Bio Anti-Bub1 Antibody (Catalog # A00776). Tested in ELISA, WB, ICC, IF applications. This antibody reacts with Human, Mouse.
Application	ELISA, IF, ICC, WB
Clonality	Polyclonal
Formulation	Bub1 Antibody is supplied in PBS containing 0.02% sodium azide.
Storage Instructions	Bub1 antibody can be stored at 4°C for three months and -20°C, stable for up to one year. Avoid repeated freeze-thaw cycles. Antibodies should not be exposed to prolonged high temperatures.
Host	Rabbit
Uniprot ID	O43683

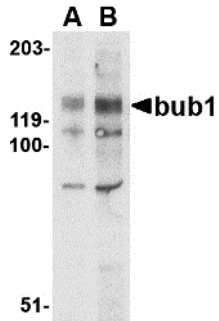
Technical Details

Immunogen	Bub1 antibody was raised against a 19 amino acid synthetic peptide from near the amino terminus of human Bub1. The immunogen is located within amino acids 40 - 90 of Bub1.
Predicted Reactive Species	Chicken, Goat, Pig
Isotype	IgG
Form	Liquid
Concentration	1 mg/mL
Purification	Bub1 Antibody is affinity chromatography purified via peptide column.

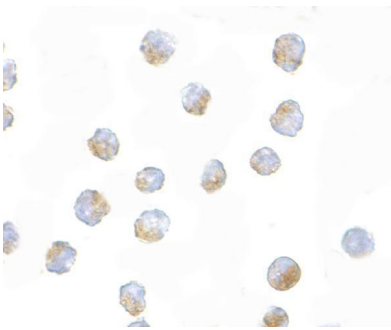
Suggested Dilutions

Bub1 antibody can be used for detection of bub1 by Western blot at 2 - 4 ug/mL. Antibody can also be used for immunocytochemistry starting at 10 ug/mL. For immunofluorescence start at 20 ug/mL. Antibody validated: Western Blot in mouse samples; Immunocytochemistry in mouse samples and Immunofluorescence in mouse samples. All other applications and species not yet tested. Optimal dilutions for each application should be determined by the researcher.

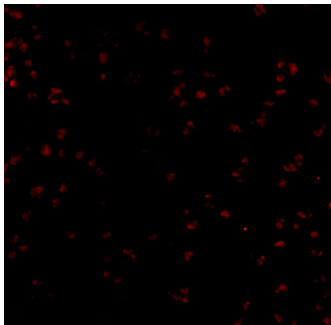
Anti-Bub1 Antibody (A00776) Images



Western blot analysis of bub1 in A-20 lysate with bub1 antibody at (A) 2 and (B) 4 ug/mL.



Immunocytochemistry of Bub1 in A20 cells with Bub1 antibody at 10 ug/mL.



Immunofluorescence of Bub1 in A20 cells with Bub1 antibody at 20 ug/mL.

Submit a product review to [Biocompare.com](https://www.biocompare.com)

Submit a review of this product to [Biocompare.com](https://www.biocompare.com) to receive a \$20 Amazon.com giftcard! Your reviews help your fellow scientists make the right decisions. Thank you for your contribution.



Anti-Bub1 Antibody

For Research Use Only. Not for use in diagnostic procedures.